

LEA Name : Central Bucks SD
Address : 20 Welden Dr
Doylestown, PA 18901

County : Bucks
AUN Number : 122092102
LEA Type : SD

Annual Financial Report

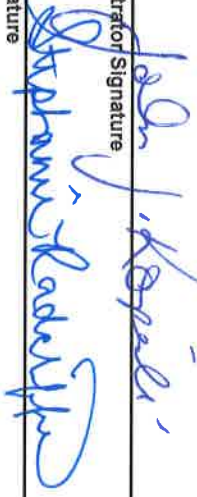
Accuracy Certification Statement

For Fiscal Year Ending
6/30/2018

Pennsylvania Department of Education
&
Office of Comptroller Operations
PDE-2056: Intermediate Unit
PDE-2057: School District, AVTS/CTC, Charter School,
and Special Program Jointure

CERTIFICATION: By signing this page I agree that the electronic data submitted is a complete and accurate statement of the financial operations and status of the local education agency for the fiscal year. It has been prepared in accordance with generally accepted accounting principles and established Commonwealth of PA reporting guidelines.

Chief School Administrator Signature



Date

4-22-19

Board Secretary Signature



Date

4-22-2019

Brian Loftus
Contact Person
brianloftus@cbsd.org
Contact Person E-mail Address

(267)893-2052 Ext :
Contact Person Telephone Number
(267)893-5800
Contact Person Fax Number

Audit Certification
Annual Financial Report:
For Fiscal Year Ending 6/30/2018
(Pursuant to PA School Code Section 218(b))

LEA Name : Central Bucks SD
AUN Number : 122092102
County : Bucks

Audit Certification Due: 12/31/2018

This certification is applicable to the Annual Financial Report data submitted through the Consolidated Financial Reporting System on: 4/18/2019
Date

Auditing Firm:
Dreslin & Company, Inc
190 West Germantown Pike
Suite 150
E. Norriton, PA 19401-1391

Auditor Contact Name: *Ron Minninger*
Auditor Phone: *610-272-3571*
Auditor E-mail: *Rminninger@dreslinpa.com*

CERTIFICATION: By signing this page I agree that the financial statements of the school have been properly audited as noted above pursuant to Article XXIV, and in the auditor's professional opinion, the Annual Financial Report (PDE-2057) submitted on the date referenced is materially consistent with the audited financial statements.

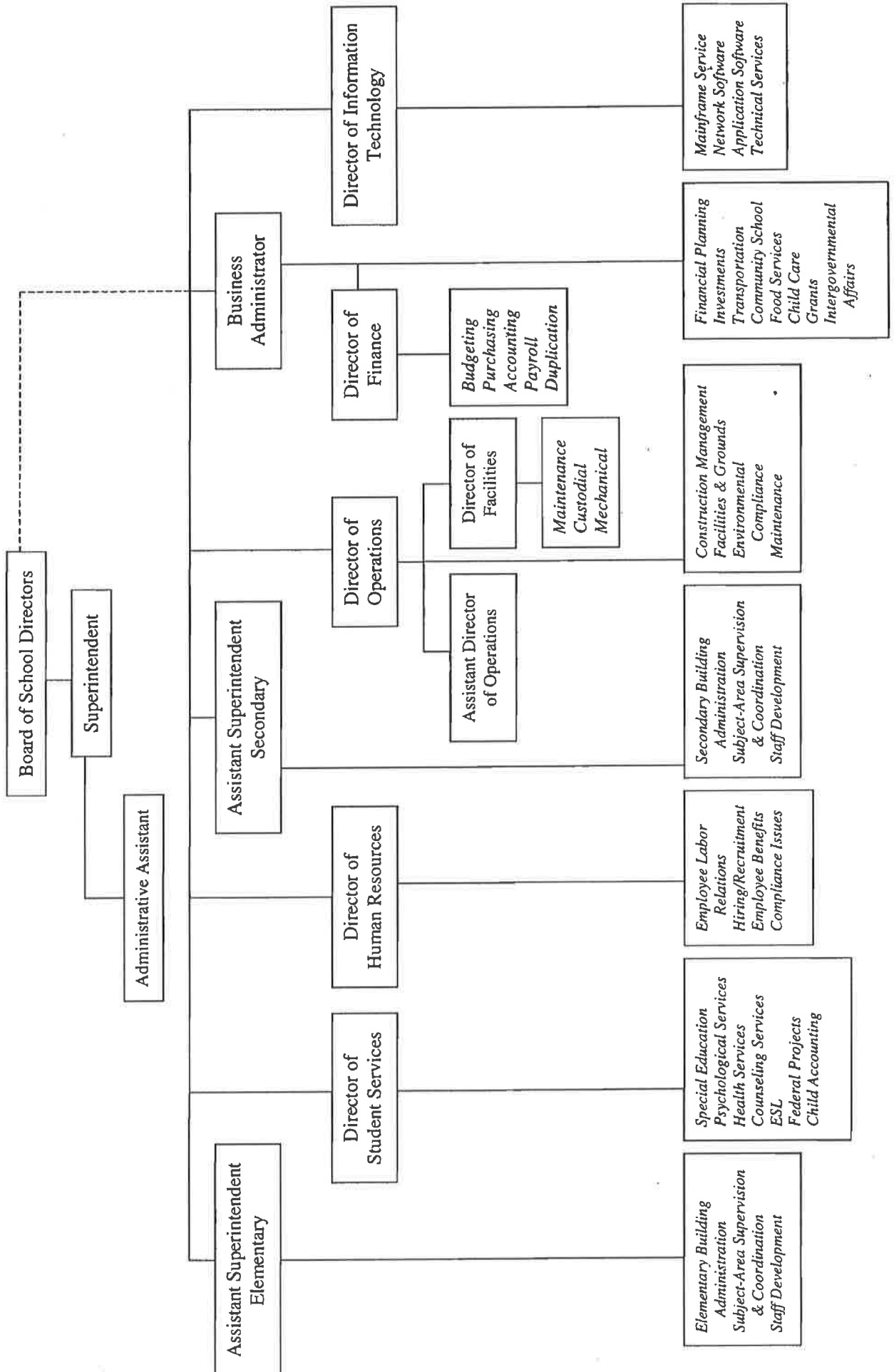
Chief School Administrator
Jody J. Kopala
Signature _____
Date 4-22-19

Board Secretary
Stephanie D. Smith
Signature _____
Date 4/22/2019

Brian Loftus
Contact Person _____
brianloftus@cbsd.org
Contact Person E-mail Address _____

(267)893-2052 Ext : _____
Contact Person Telephone Number _____
(267)893-5800
Contact Person Fax Number _____

Central Bucks School District Organization Chart



REVISED SUBMISSION

<u>Val Number</u>	<u>Description</u>	<u>Justification</u>
12195	<p>REG: Current Year AFR Beginning Fund Balance must equal Prior Year AFR Ending Fund Balance. Justifications to this error must fully explain the situation that prompted a fund balance restatement. "Auditor Adjustment" is not a sufficient justification.</p> <p>Total Govt Funds, Beg Bal: \$96,573,532.00 PY Ending Bal, Govt Funds: \$90,276,622.00</p>	<p>Due to prior period audit adjustments, the beginning fund balance increase by 6.3M. These adjustments were to increase taxes receivable because of a change in the accrual period and the elimination of a reserve for Real Estate tax assessment changes.</p>
12196	<p>REG - Fund 10: Current Year AFR Beginning Fund Balance must equal Prior Year AFR Ending Fund Balance. Justifications to this error must fully explain the situation that prompted a fund balance restatement. "Auditor Adjustment" is not a sufficient justification.</p> <p>REG Fund 10, Beg Fund Bal: \$48,201,020.00 PY Ending Fund Balance: \$41,904,110.00</p>	<p>Due to prior period audit adjustments, the beginning fund balance increase by 6.3M. These adjustments were to increase taxes receivable because of a change in the accrual period and the elimination of a reserve for Real Estate tax assessment changes.</p>
16230	<p>REP Fund 51 – Net Position - Beginning of Fiscal Year must equal Prior Year AFR, Net Position - End of Year. Justifications to this error must fully explain the situation that prompted a fund balance restatement. "Auditor Adjustment" is not a sufficient justification.</p> <p>REP Fund 51 – Net Position - Beginning of Fiscal Year: \$592,325.00 REP Fund 51, Prior Year AFR, Net Position - End of Year: \$891,275.00</p>	<p>A decrease of \$113,306.58 was made to adjust inventory to zero as the district no longer owns existing inventory. An additional adjustment of \$185,646.87 was made to write off fixed assets.</p>
50450	<p>SESS - 2350 Legal and Accounting Services: SESS Schedule amounts for Special Education vary from prior year by 40% or more. Correct the data or enter a justification.</p> <p>SESS Schedule 2350: \$75,147.38 Prior Year SESS Schedule 2350: \$43,087.09</p>	<p>Special Needs legal fees can vary significantly from year to year based on student cases and IEP challenges. The expense for 1718 was on the high side while the expense for 1617 as lower than normal.</p>

REVISED SUBMISSION

Amounts Expressed in Whole Dollars

	<u>General Fund</u> <u>(10)</u>	<u>Public Purpose Trust</u> <u>(27)</u>	<u>Other Compt Approved</u> <u>(28)</u>	<u>Athletic / Activity</u> <u>(29)</u>	<u>Capital Reserve (690.</u> <u>1850)</u> <u>(31)</u>
Assets And Deferred Outflows Of Resources					
Assets					
0100 Cash and Cash Equivalents	36,491,387				
0110 Investments	14,965,000				
0120 Taxes Receivable	7,448,789				
0130 Due From Other Funds	238,835				
0141 Due From Other Governments					
0142 State Revenue Receivable	12,537,932				
0143 Federal Revenue Receivable	1,484,912				
0145 Other Intergovernmental Revenue Receivable					
0146 Due from Primary Government					
0147 Due from Component Unit					
0150 Other Receivables	733,311				
0170 Inventories	59,273				
0180 Prepaid Expenses (Expenditures)	3,447,058				
0190 Other Current Assets					
Total Assets	\$77,406,497				
0910 Deferred Outflows of Resources					
Total Assets And Deferred Outflows Of Resources	\$77,406,497				

Amounts Expressed in Whole Dollars

	<u>Capital Reserve (1431)</u> <u>(32)</u>	<u>Other Capital Projects</u> <u>Fund</u> <u>(39)</u>	<u>Debt Service</u> <u>(40)</u>	<u>Permanent</u> <u>(90)</u>	<u>Total Governmental</u> <u>Funds</u>
Assets And Deferred Outflows Of Resources					
Assets					
0100 Cash and Cash Equivalents		3,433,186	19,937,095		59,861,668
0110 Investments		37,570,000			52,535,000
0120 Taxes Receivable					7,448,789
0130 Due From Other Funds					238,835
0141 Due From Other Governments					
0142 State Revenue Receivable					12,537,932
0143 Federal Revenue Receivable					1,484,912
0145 Other Intergovernmental Revenue Receivable					
0146 Due from Primary Government					
0147 Due from Component Unit					
0150 Other Receivables					733,311
0170 Inventories					59,273
0180 Prepaid Expenses (Expenditures)					3,447,058
0190 Other Current Assets					
Total Assets		\$41,003,186	\$19,937,095		\$138,346,778
0910 Deferred Outflows of Resources					
Total Assets And Deferred Outflows Of Resources		\$41,003,186	\$19,937,095		\$138,346,778

REVISED SUBMISSION

Amounts Expressed in Whole Dollars

<u>General Fund</u>	<u>Public Purpose Trust</u>	<u>Other Compt Approved</u>	<u>Athletic / Activity</u>	<u>Capital Reserve (690.</u>
<u>(10)</u>	<u>(27)</u>	<u>(28)</u>	<u>(29)</u>	<u>1850)</u>
				<u>(31)</u>

Liabilities And Deferred Inflows Of Resources And Fund Balances

Liabilities

0400 Due to Other Funds	
0411 Due to Other Governments	
0412 Due to Primary Government	
0413 Due to Component Unit	
0420 Accounts Payable	2,808,467
0430 Contracts Payable	
0440 Current Portion of Long-Term Debt	
0450 Short-Term Payables	
0461 Accrued Salaries and Benefits	1,558,260
0462 Payroll Deductions and Withholding	24,531,024
0480 Unearned Revenues	203,949
0490 Other Current Liabilities	

Total Liabilities \$29,101,700

0950 Deferred Inflows of Resources	2,004,564
------------------------------------	-----------

Fund Balances

0810 Nonspendable Fund Balance	3,506,331
0820 Restricted Fund Balance	
0830 Committed Fund Balance	
0840 Assigned Fund Balance	20,070,981
0850 Unassigned Fund Balance	22,722,921

Total Fund Balances \$46,300,233

Total Liabilities, Deferred Inflows Of Resources And Fund Balances \$77,406,497

REVISED SUBMISSION

Amounts Expressed in Whole Dollars

	<u>Capital Reserve (1431)</u> <u>(32)</u>	<u>Other Capital Projects</u> <u>Fund</u> <u>(39)</u>	<u>Debt Service</u> <u>(40)</u>	<u>Permanent</u> <u>(90)</u>	<u>Total Governmental</u> <u>Funds</u>
Liabilities And Deferred Inflows Of Resources And Fund Balances					
Liabilities					
0400 Due to Other Funds		234,629			234,629
0411 Due to Other Governments					
0412 Due to Primary Government					
0413 Due to Component Unit					
0420 Accounts Payable		1,822,715			4,631,182
0430 Contracts Payable					
0440 Current Portion of Long-Term Debt					
0450 Short-Term Payables					
0461 Accrued Salaries and Benefits					1,558,260
0462 Payroll Deductions and Withholding					24,531,024
0480 Unearned Revenues					203,949
0490 Other Current Liabilities					
Total Liabilities		\$2,057,344			\$31,159,044
0950 Deferred Inflows of Resources					2,004,564
Fund Balances					
0810 Nonspendable Fund Balance					3,506,331
0820 Restricted Fund Balance					
0830 Committed Fund Balance		38,945,842			38,945,842
0840 Assigned Fund Balance			19,937,095		40,008,076
0850 Unassigned Fund Balance					22,722,921
Total Fund Balances		\$38,945,842	\$19,937,095		\$105,183,170
Total Liabilities, Deferred Inflows Of Resources And Fund Balances		\$41,003,186	\$19,937,095		\$138,346,778

REVISED SUBMISSION

Amounts Expressed in Whole Dollars	<u>General Fund</u> <u>(10)</u>	<u>Public Purpose Trust</u> <u>(27)</u>	<u>Other Compt Approved</u> <u>(28)</u>	<u>Athletic / Activity</u> <u>(29)</u>	<u>Capital Reserve (690.</u> <u>1850)</u> <u>(31)</u>
Revenues					
6000 Revenue from Local Sources	259,544,096				
7000 Revenue from State Sources	68,528,198				
8000 Revenue from Federal Sources	1,954,214				
Total Revenues	\$330,026,508				
Expenditures					
1000 Instruction	188,117,762				
2000 Support Services	93,122,677				
3000 Operation of Non-Instructional Services	8,146,901				
4000 Facilities Acquisition, Construction and Improvement Services					
5110 Debt Service	14,590,144				
5130 Refund of Prior Year Revenues / Receipts					
Total Expenditures	\$303,977,484				
Excess (Deficiency) Of Revenues Over Expenditures	\$26,049,024				
Other Financing Sources (Uses)					
9110 Face Value of Bonds Issued					
9120 Proceeds from Refunding of Bonds					
9130 Bond Premiums					
9200 Proceeds from Extended-Term Financing					
9300 Interfund Transfers - IN					
9400 Sale of or Compensation for Loss of Fixed Assets	50,189				
9710 Transfers from Component Units					
9720 Transfers from Primary Governments					
9910 Other Financing Sources Not Listed in the 9000 Series					
9990 Insurance Recoveries					
5120 Debt Service – Refunded Bonds					
5150 Bond Discounts					
5200 Interfund Transfers – Out	28,000,000				
5300 Transfers Out to Component Units/Primary Governments					
Total Other Financing Sources (Uses)	(\$27,949,811)				

Amounts Expressed in Whole Dollars	<u>Capital Reserve (1431)</u> <u>(32)</u>	<u>Other Capital Projects</u> <u>Fund</u> <u>(39)</u>	<u>Debt Service</u> <u>(40)</u>	<u>Permanent</u> <u>(90)</u>	<u>Total Governmental</u> <u>Funds</u>
Revenues					
6000 Revenue from Local Sources		395,937	113,268		260,053,301
7000 Revenue from State Sources					68,528,198
8000 Revenue from Federal Sources					1,954,214
Total Revenues		\$395,937	\$113,268		\$330,535,713
Expenditures					
1000 Instruction					188,117,762
2000 Support Services		5,961,364			99,084,041
3000 Operation of Non-Instructional Services					8,146,901
4000 Facilities Acquisition, Construction and Improvement Services		12,687,909			12,687,909
5110 Debt Service					14,590,144
5130 Refund of Prior Year Revenues / Receipts					
Total Expenditures		\$18,649,273			\$322,626,757
Excess (Deficiency) Of Revenues Over Expenditures		(\$18,253,336)	\$113,268		\$7,908,956
Other Financing Sources (Uses)					
9110 Face Value of Bonds Issued					
9120 Proceeds from Refunding of Bonds					
9130 Bond Premiums					
9200 Proceeds from Extended-Term Financing					
9300 Interfund Transfers - IN		28,000,000			28,000,000
9400 Sale of or Compensation for Loss of Fixed Assets		650,492			700,681
9710 Transfers from Component Units					
9720 Transfers from Primary Governments					
9910 Other Financing Sources Not Listed in the 9000 Series					
9990 Insurance Recoveries					
5120 Debt Service – Refunded Bonds					
5150 Bond Discounts					
5200 Interfund Transfers – Out					28,000,000
5300 Transfers Out to Component Units/Primary Governments					
Total Other Financing Sources (Uses)		\$28,650,492			\$700,681

REVISED SUBMISSION

Amounts Expressed in Whole Dollars

	<u>General Fund</u> <u>(10)</u>	<u>Public Purpose Trust</u> <u>(27)</u>	<u>Other Compt Approved</u> <u>(28)</u>	<u>Athletic / Activity</u> <u>(29)</u>	<u>Capital Reserve</u> <u>(690.</u> <u>1850)</u> <u>(31)</u>
Special And Extraordinary Items					
9920 Special Items – Gains					
9930 Extraordinary Items – Gains					
5520 Special Items – Losses					
5530 Extraordinary Items – Losses					
Net Change In Fund Balances	(\$1,900,787)				
Fund Balance					
0001 Fund Balance - Beginning of Fiscal Year	48,201,020				
Fund Balance - End Of Year	\$46,300,233				

REVISED SUBMISSION

Amounts Expressed in Whole Dollars	<u>Capital Reserve (1431)</u> <u>(32)</u>	<u>Other Capital Projects</u> <u>Fund</u> <u>(39)</u>	<u>Debt Service</u> <u>(40)</u>	<u>Permanent</u> <u>(90)</u>	<u>Total Governmental</u> <u>Funds</u>
Special And Extraordinary Items					
9920 Special Items – Gains					
9930 Extraordinary Items – Gains					
5520 Special Items – Losses					
5530 Extraordinary Items – Losses					
Net Change In Fund Balances		\$10,397,156	\$113,268		\$8,609,637
Fund Balance					
0001 Fund Balance - Beginning of Fiscal Year		28,548,686	19,823,826		96,573,532
Fund Balance - End Of Year		\$38,945,842	\$19,937,094		\$105,183,169

REVISED SUBMISSION

Amounts Expressed in Whole Dollars

	<u>Food Service</u> <u>(51)</u>	<u>Child Care</u> <u>Operations</u> <u>(52)</u>	<u>Other Enterprise</u> <u>(58)</u>	<u>TOTAL</u>	<u>Internal Service</u> <u>(60)</u>
Assets And Deferred Outflows Of Resources					
Current Assets					
0100 Cash and Cash Equivalents	212,394			212,394	
0110 Investments					
0130 Due From Other Funds					
0141 Due From Other Governments					
0142 State Revenue Receivable	24,340			24,340	
0143 Federal Revenue Receivable	220,485			220,485	
0146 Due from Primary Government					
0147 Due from Component Unit					
0150 Other Receivables	135,230			135,230	
0170 Inventories					
0180 Prepaid Expenses (Expenditures)					
0190 Other Current Assets					
Total Current Assets	\$592,449			\$592,449	
Noncurrent Assets					
0211 Land					
0212 Site Improvements (Net)					
0220 Buildings and Building Improvements (Net)					
0230 Machinery, Equipment and Furniture (Net)	520,174			520,174	
0250 Construction in Progress					
0260 Long Term Prepayments					
0290 Other Noncurrent Assets					
Total Noncurrent Assets	\$520,174			\$520,174	
0910 Deferred Outflows of Resources					
Total Assets And Deferred Outflows Of Resources	\$1,112,623			\$1,112,623	

Amounts Expressed in Whole Dollars	<u>Food Service</u> <u>(51)</u>	<u>Child Care</u> <u>Operations</u> <u>(52)</u>	<u>Other Enterprise</u> <u>(58)</u>	<u>TOTAL</u>	<u>Internal Service</u> <u>(60)</u>
Liabilities And Deferred Inflows Of Resources And Net Position					
Current Liabilities					
0400 Due to Other Funds	4,206			4,206	
0411 Due to Other Governments					
0413 Due to Component Unit					
0420 Accounts Payable	342,526			342,526	
0430 Contracts Payable					
0440 Current Portion of Long-Term Debt					
0450 Short-Term Payables					
0461 Accrued Salaries and Benefits					
0462 Payroll Deductions and Withholding					
0480 Unearned Revenues	278,088			278,088	
0490 Other Current Liabilities					
Total Current Liabilities	\$624,820			\$624,820	
Noncurrent Liabilities					
0510 Bonds Payable					
0520 Extended-Term Financing Agreements Payable					
0530 Lease-Purchase Obligations					
0540 Accumulated Compensated Absences					
0550 Authority Lease Obligations					
0560 Other Post-Employment Benefits (OPEB)					
0570 Net Pension Liability					
0599 Other Noncurrent Liabilities					
Total Noncurrent Liabilities					
Total Liabilities	\$624,820			\$624,820	
0950 Deferred Inflows of Resources					
Net Position					
0791 Net Investment in Capital Assets					
0008 Restricted Net Position (0792 – 0798)	487,803			487,803	
0799 Unrestricted Net Position					
Total Net Position	\$487,803			\$487,803	
Total Liabilities And Deferred Inflows Of Resources And Net Position	\$1,112,623			\$1,112,623	

REVISED SUBMISSION

Amounts Expressed in Whole Dollars	<u>Food Service</u> <u>(51)</u>	<u>Child Care Operations</u> <u>(52)</u>	<u>Other Enterprise</u> <u>(58)</u>	<u>TOTAL</u>	<u>Internal Service</u> <u>(60)</u>
Operating Revenues					
6600 Food Service Revenue	3,584,686			3,584,686	
0071 Charges for Services					
0072 Other Operating Revenue					
Total Operating Revenues	\$3,584,686			\$3,584,686	
Operating Expenses					
100 Personnel Services – Salaries					
200 Personnel Services – Employee Benefits					
300 Purchased Professional and Technical Services					
400 Purchased Property Services	524,787			524,787	
500 Other Purchased Services	3,998,597			3,998,597	
600 Supplies	31,470			31,470	
740 Depreciation	93,483			93,483	
810 Dues and Fees					
890 Miscellaneous Expenditures	22,501			22,501	
Total Operating Expenses	\$4,670,838			\$4,670,838	
Operating Income (Loss)	(\$1,086,152)			(\$1,086,152)	
Non Operating Revenues (Expenses)					
6500 Earnings on Investments	1,024			1,024	
6920 Contributions and Donations from Private Sources					
6930 Gains or Losses on Sale of Fixed Assets					
6991 Refunds of a Prior Year Expenditure					
7000 Revenue from State Sources	75,547			75,547	
8000 Revenue from Federal Sources	905,059			905,059	
820 Claims and Judgments Against the LEA					
830 Interest					
TOTAL Non Operating Revenues (Expenses)	\$981,630			\$981,630	
Income (Loss) Before Contributions And Transfers	(\$104,522)			(\$104,522)	

REVISED SUBMISSION

Amounts Expressed in Whole Dollars	<u>Food Service</u> <u>(51)</u>	<u>Child Care Operations</u> <u>(52)</u>	<u>Other Enterprise</u> <u>(58)</u>	<u>TOTAL</u>	<u>Internal Service</u> <u>(60)</u>
Contributions, Transfers, and Special and Extraordinary Items					
5200 Interfund Transfers – Out					
5300 Transfers Out to Component Units/Primary Governments					
5520 Special Items – Losses					
5530 Extraordinary Items – Losses					
9300 Interfund Transfers - IN					
9500 Capital Contributions					
9700 Transfers IN From Component Units/Primary Governments					
9920 Special Items – Gains					
9930 Extraordinary Items – Gains					
Change In Net Position	(\$104,522)			(\$104,522)	
0002 Net Position - Beginning of Fiscal Year	592,325			592,325	
0003 Accounting Changes / Residual Equity Transfers					
Net Position - End Of Year	\$487,803			\$487,803	

LEA : 122092102 Central Bucks SD

Printed 4/23/2019 4:10:43 PM

REVISED SUBMISSION

Amounts Expressed in Whole Dollars	<u>Food Service</u> <u>(51)</u>	<u>Child Care Operations</u> <u>(52)</u>	<u>Other Enterprise</u> <u>(58)</u>	<u>TOTAL</u>	<u>Internal Service(60)</u>
Cash Flows From Operating Activities					
0011 Cash Receipts From Users	3,610,681			3,610,681	
0012 Cash Receipts From Assessments Made to Other Funds					
0013 Cash Receipts From Earnings on Investments					
0014 Cash Receipts From Other Operating Revenue					
0015 Cash Payments To Employees For Services					
0016 Cash Payments For Insurance Claims					
0017 Cash Payments To Suppliers For Goods and Services	4,562,384			4,562,384	
0018 Cash Payments For Other Operating Expenses					
Net Cash Provided By (Used For) Operating Activities	(\$951,703)			(\$951,703)	
Cash Flows From Non-Capital Financing Activities					
0021 Receipts From Local Sources - 6000					
0022 Receipts From State Sources - 7000	51,207			51,207	
0023 Receipts From Federal Sources -8000	829,359			829,359	
0024 Notes and Loans Received (Repaid)					
0025 Interest Paid on Notes/Loans - 5100-830					
0026 Operating Transfers In (Out)/Residual Equity Trans					
0027 Operating Transfers In (Out) Primary Government / Comp Unit					
0028 Receipts From Refund of Prior Year Expenditures - 6991					
0029 Special and Extraordinary Gains (losses)					
0030 Receipts from Insurance Recoveries -9990					
Net Cash Prov By (Used for) Non-Capital Financing Activities	\$880,566			\$880,566	
Cash Flows From Capital and Related Financing Activities					
0031 Payments For Fac Acq, Const, and Imp - 4000					
0032 Gain / (Loss) on Sale of Fixed Assets - 6930					
0033 Proceeds From Extended Term Financing - 9200					
0034 Principal Paid on Financing Agreements					
0035 Interest Paid on Financing Agreements - 5100-830					
0036 (Inc) Dec in Contributed Capital					
Net Cash Prov By (Used for) Capital and Related Financing Activities					
Cash Flows From Investing Activities					
0041 Earnings on Investments - 6500	1,024			1,024	
0042 Purchase of Inv Securities / Deposits to Inv Pools					
0043 Receipts From Investment Pool Withdrawals					
0044 Proceeds from Sale and Maturity of Inv Securities					

LEA : 122092102 Central Bucks SD

Printed 4/23/2019 4:10:43 PM

REVISED SUBMISSION

Page - 2 of 4

0045 Loans Received (Paid)

Net Cash Prov By (Used for) Investing Activities	\$1,024	\$1,024
---------------------------------------------------------	----------------	----------------

	<u>Food Service</u> <u>(51)</u>	<u>Child Care Operations</u> <u>(52)</u>	<u>Other Enterprise</u> <u>(58)</u>	<u>TOTAL</u>	<u>Internal Service</u> <u>(60)</u>
Net Increase (Decrease) in Cash Flows	(70,113)			(70,113)	
0004 Cash and Cash Equivalents Beginning of Year	282,507			282,507	
Cash and Cash Equivalents at Year End	\$212,394			\$212,394	

Reconciliation of Operating Income (Loss) To Net Cash Provided by (Used For) Operating Activities

0005 Operating Income (Loss) per REP	(1,086,152)			(1,086,152)	
--------------------------------------	-------------	--	--	-------------	--

Adjustments

0051 Depreciation and Net Amortization					
0052 Provision for Uncollectible Accounts					
0053 Other Adjustments					

Effect of Changes in Assets, Liabilities, Deferred Outflows and Deferred Inflows

0054 (Inc) Dec In Accounts Receivable (0120-0150)	134,449			134,449	
0055 Advances to Other Funds (0160)					
0056 (Inc) Dec in Inventories (0170)					
0057 (Inc) Dec in Prepaid Expenses (0180)					
0058 (Inc) Dec in Other Current or Noncurrent Assets					
0064 Deferred Outflows (0910)					
0059 Inc (Dec) in Accounts Payable (0400-0450)					
0060 Inc (Dec) in Accrued Salaries/Benefits (0461)					
0065 Inc (Dec) in Net Pension Liabilities (0570)					
0066 Inc (Dec) in Other Postemp Benefit Oblig (0560)					
0061 Inc (Dec) in Payroll Deductions/Withholding (0462)					
0062 Inc (Dec) in Unearned Revenue (0480)					
0063 Inc (Dec) in Other Current or Noncurrent Liabilities					
0067 Deferred Inflows (0950)					

Total Adjustments	\$134,449			\$134,449	
Cash Provided By (Used for) Total	(\$951,703)			(\$951,703)	

COMBINED STATEMENT OF CASH FLOWS
SCHEDULE OF NONCASH INVESTING, CAPITAL, AND FINANCING ACTIVITIES

Explanation of Transaction and Balance Sheet Effect	Amount
Total	

LEA : 122092102 Central Bucks SD

Printed 4/23/2019 4:10:44 PM

REVISED SUBMISSION

Page - 1 of 4

Amounts Expressed in Whole Dollars

	<u>Private Purpose Trust</u> (71)	<u>Investment Trust</u> (72)	<u>Pension Trust</u> (73)	<u>Activity</u> (81)
Assets And Deferred Outflows Of Resources				
Assets				
0100 Cash and Cash Equivalents	81,774			1,409,921
0110 Investments				
0130 Due From Other Funds				
0147 Due from Component Unit				
0150 Other Receivables				
0170 Inventories				
0180 Prepaid Expenses (Expenditures)				
0190 Other Current Assets				
0220 Buildings and Building Improvements (Net)				
0230 Machinery, Equipment and Furniture (Net)				
Total Assets	\$81,774			\$1,409,921
0910 Deferred Outflows of Resources				
Total Assets And Deferred Outflows Of Resources	\$81,774			\$1,409,921

LEA : 122092102 Central Bucks SD

Printed 4/23/2019 4:10:44 PM

REVISED SUBMISSION

Amounts Expressed in Whole Dollars

Assets And Deferred Outflows Of Resources

Assets

	<u>Other Agency</u> <u>(89)</u>	<u>Discrete Component Units</u> <u>(98)</u>	<u>Discrete Component Units</u> <u>(99)</u>	<u>Total Fiduciary Funds</u>
0100 Cash and Cash Equivalents				1,491,695
0110 Investments				
0130 Due From Other Funds				
0147 Due from Component Unit				
0150 Other Receivables				
0170 Inventories				
0180 Prepaid Expenses (Expenditures)				
0190 Other Current Assets				
0220 Buildings and Building Improvements (Net)				
0230 Machinery, Equipment and Furniture (Net)				

Total Assets **\$1,491,695**

0910 Deferred Outflows of Resources

Total Assets And Deferred Outflows Of Resources **\$1,491,695**

LEA : 122092102 Central Bucks SD

Printed 4/23/2019 4:10:44 PM

REVISED SUBMISSION

Amounts Expressed in Whole Dollars

	<u>Private Purpose Trust</u> (71)	<u>Investment Trust</u> (72)	<u>Pension Trust</u> (73)	<u>Activity</u> (81)
Liabilities, Deferred Inflows Of Resources And Net Position				
Liabilities				
0400 Due to Other Funds				
0411 Due to Other Governments				
0412 Due to Primary Government				
0413 Due to Component Unit				
0420 Accounts Payable				
0430 Contracts Payable				
0450 Short-Term Payables				
0461 Accrued Salaries and Benefits				
0462 Payroll Deductions and Withholding				
0480 Unearned Revenues				
0490 Other Current Liabilities				1,409,921
Total Liabilities				\$1,409,921
0950 Deferred Inflows of Resources				
Net Position				
0791 Net Investment in Capital Assets				
0009 Restricted Net Position (0792 – 0798)				
0799 Unrestricted Net Position		81,774		
Total Net Position		\$81,774		
Total Liabilities, Deferred Inflows Of Resources And Net Position		\$81,774		\$1,409,921

LEA : 122092102 Central Bucks SD

Printed 4/23/2019 4:10:44 PM

REVISED SUBMISSION

Amounts Expressed in Whole Dollars

<u>Other Agency</u>	<u>Discrete Component Units</u>	<u>Discrete Component Units</u>	<u>Total Fiduciary Funds</u>
(89)	(98)	(99)	

Liabilities, Deferred Inflows Of Resources And Net Position

Liabilities

0400 Due to Other Funds			
0411 Due to Other Governments			
0412 Due to Primary Government			
0413 Due to Component Unit			
0420 Accounts Payable			
0430 Contracts Payable			
0450 Short-Term Payables			
0461 Accrued Salaries and Benefits			
0462 Payroll Deductions and Withholding			
0480 Unearned Revenues			
0490 Other Current Liabilities			1,409,921
Total Liabilities			\$1,409,921

0950 Deferred Inflows of Resources

Net Position

0791 Net Investment in Capital Assets			
0009 Restricted Net Position (0792 – 0798)			
0799 Unrestricted Net Position			81,774
Total Net Position			\$81,774

Total Liabilities, Deferred Inflows Of Resources And Net Position			\$1,491,695
--------------------------------------------------------------------------	--	--	--------------------

REVISED SUBMISSION

Amounts Expressed in Whole Dollars	<u>Private Purpose Trust</u> <u>(71)</u>	<u>Investment Trust</u> <u>(72)</u>	<u>Pension Trust</u> <u>(73)</u>	<u>Discrete Component</u> <u>Units</u> <u>(98)</u>	<u>Discrete Component</u> <u>Units</u> <u>(99)</u>	<u>Total Fiduciary</u> <u>Funds</u>
Additions						
0091 Gifts and Contributions	27,152					27,152
0092 Other Additions	102					102
Deductions						
0093 Scholarships Awarded	17,448					17,448
0094 Other Deductions						
Change In Net Position	\$9,806					\$9,806
0006 Net Position – Beginning of Fiscal Year	71,968					71,968
0007 Net Position Held in Trust for Pension Benefits						
Net Position - End of Fiscal Year	\$81,774					\$81,774

REVISED SUBMISSION

	<u>Revenue Reported In Current Year</u>	<u>Current Year Tax Accrual</u>	<u>Prior Year Tax Accrual</u>	<u>Taxes Collected In Current Year</u>
<u>Revenue from Local Sources</u>				
6111 Current Real Estate Taxes	214,782,853.55	669,831.10	907,657.00	215,020,679.45
6112 Interim Real Estate Taxes	2,249,806.24	164,459.86		2,085,346.38
6113 Public Utility Realty Taxes	251,606.38			251,606.38
6151 Current Act 511 Earned Income Taxes	24,580,718.35	3,857,531.39	3,885,308.00	24,608,494.96
6153 Current Act 511 Real Estate Transfer Taxes	5,263,456.22	555,072.54	597,846.00	5,306,229.68
6411 Delinquent Real Estate Taxes	2,331,101.46	170,838.11	142,027.00	2,302,290.35
6451 Delinquent Act 511 Earned Income Taxes	683,437.10	50,946.69	131,166.00	763,656.41
6500 Earnings on Investments	1,598,508.45			
6700 Revenues from LEA Activities	369,701.70			
6821 State Revenue Received from Other Pennsylvania Public LEAs	8,085.00			
6832 Federal IDEA Revenue Received as Pass Through	2,457,390.00			
6910 Rentals	43,273.44			
6920 Contributions and Donations from Private Sources	260,163.85			
6941 Regular Day School Tuition	12,442.36			
6944 Receipts from Other LEAs in Pennsylvania - Education	677,095.30			
6980 Revenue from Community Services Activities	3,922,312.50			
6999 Other Revenues Not Specified Above	52,144.08			
TOTAL Revenue from Local Sources	\$259,544,095.98	\$5,468,679.69	\$5,664,004.00	\$250,338,303.61

REVISED SUBMISSION

Revenue Reported
In Current Year

Revenue from State Sources

7110 Basic Education Funding	17,977,164.91		
7160 Tuition for Orphans Subsidy	133,541.70		
7271 Special Education funds for School-Aged Pupils	7,391,104.56		
7299 Program Revenues Not Listed Previously in the 7200 Series	699.89		
7311 Pupil Transportation Subsidy	2,558,234.59		
7312 Nonpublic and Charter School Pupil Transportation Subsidy	655,270.00		
7320 Rental and Sinking Fund Payments / Building Reimbursement Subsidy	1,256,125.96		
7330 Health Services (Medical, Dental, Nurse, Act 25)	363,265.85		
7340 State Property Tax Reduction Allocation	6,080,991.29		
7505 Ready to Learn Block Grant	1,024,042.00		
7810 State Share of Social Security and Medicare Taxes	5,678,614.99		
7820 State Share of Retirement Contributions	25,409,142.11		
TOTAL Revenue from State Sources	\$68,528,197.85		

REVISED SUBMISSION

Revenue Reported
In Current Year

Revenue from Federal Sources

8514 NCLB, Title I - Improving the Academic Achievement of the Disadvantaged	661,331.00		
8515 NCLB, Title II - Preparing, Training and Recruiting High Quality Teachers and Principals	335,906.00		
8516 NCLB, Title III - Language Instruction for Limited English Proficient and Immigrant Students	53,132.00		
8517 NCLB, Title IV - 21St Century Schools	15,209.00		
8810 School-Based Access Medicaid Reimbursement Program (SBAP) Reimbursements (Access)	848,253.55		
8820 Medical Assistance Reimbursement for Administrative Claiming (Quarterly) Program	40,382.02		
TOTAL Revenue from Federal Sources	\$1,954,213.57		

REVISED SUBMISSION

Revenue Reported
In Current Year

Other Financing Sources

9400 Sale of or Compensation for Loss of Fixed Assets	50,188.97			
TOTAL Other Financing Sources	\$50,188.97			
TOTAL FROM ALL SOURCES	\$330,076,696.37	\$5,468,679.69	\$5,664,004.00	\$250,338,303.61

REVISED SUBMISSION

Revenue from Local Sources	259,544,095.98
Revenue from State Sources	68,528,197.85
Revenue from Federal Sources	1,954,213.57
Other Financing Sources	50,188.97
TOTAL FROM ALL SOURCES	\$330,076,696.37

General Fund (10)

	<u>Total</u>
1000 Instruction	
100 Personnel Services – Salaries	
100 Personnel Services – Salaries	108,358,279.86
Total Personnel Services – Salaries	\$108,358,279.86
200 Personnel Services – Employee Benefits	
210 Group Insurance – Contracted Provider	125,257.55
220 Social Security Contributions	7,992,085.51
230 PSERS Retirement Contributions	35,370,290.91
250 Unemployment Compensation	20,920.28
260 Workers’ Compensation	971,676.73
270 Group Insurance – Self-Insurance	18,988,832.53
291 Other Retirement Plans	17,679.99
Total Personnel Services – Employee Benefits	\$63,486,743.50
300 Purchased Professional and Technical Services	
322 Professional Educational Services – Ius	1,002,453.07
329 Professional Educational Services – Other	408,952.81
330 Other Professional Services	1,557,665.71
Total Purchased Professional and Technical Services	\$2,969,071.59
400 Purchased Property Services	
430 Repairs and Maintenance Services	204,646.95
440 Rentals	501,990.72
Total Purchased Property Services	\$706,637.67
500 Other Purchased Services	
550 Printing and Binding	1,286.04
561 Tuition To Other School Districts Within the State	27,639.45
562 Tuition To Pennsylvania Charter Schools	1,400,245.36
564 Tuition To Career and Technology Centers	4,623,029.28
567 Tuition To Approved Private Schools (APS) and PA Chartered Schools for the Deaf and Blind	231,853.07
568 Tuition To Private Residential Rehabilitative Institutions (PRRI) [In-State] and Detention Centers	646,765.82
569 Tuition – Other	2,304,142.98
580 Travel	71,446.97
592 Services Purchased From Another LEA Within the State	16,404.00
594 IU Payment By Withholding for Institutionalized Children’s Programs – Special Classes	3,334.20
Total Other Purchased Services	\$9,326,147.17
600 Supplies	
610 General Supplies	1,348,119.94
620 Energy	380,517.10
640 Books and Periodicals	1,173,568.45
650 Supplies & Fees – Technology Related	359,575.91
Total Supplies	\$3,261,781.40
800 Other Objects	
810 Dues and Fees	9,100.65

REVISED SUBMISSION

General Fund (10)

1000 Instruction

	<u>Total</u>
Total Other Objects	\$9,100.65
Total 1000 Instruction	\$188,117,761.84

General Fund (10)

1100 Regular Programs – Elementary / Secondary

	<u>Elementary</u>	<u>Secondary</u>	<u>Federal</u>	<u>Total</u>
100 Personnel Services – Salaries				
100 Personnel Services – Salaries	41,931,609.69	42,361,677.10	667,078.19	84,960,364.98
Total Personnel Services – Salaries	\$41,931,609.69	\$42,361,677.10	\$667,078.19	\$84,960,364.98
200 Personnel Services – Employee Benefits				
210 Group Insurance – Contracted Provider	48,802.49	49,303.03		98,105.52
220 Social Security Contributions	3,096,582.48	3,142,789.51	50,764.52	6,290,136.51
230 PSERS Retirement Contributions	13,618,442.09	13,888,317.42	210,188.68	27,716,948.19
250 Unemployment Compensation	8,480.24	6,930.99	81.22	15,492.45
260 Workers' Compensation	352,380.54	306,077.91	7,959.67	666,418.12
270 Group Insurance – Self-Insurance	6,611,627.68	6,350,833.68	27,669.37	12,990,130.73
291 Other Retirement Plans	5,658.24	6,129.75		11,787.99
Total Personnel Services – Employee Benefits	\$23,741,973.76	\$23,750,382.29	\$296,663.46	\$47,789,019.51
300 Purchased Professional and Technical Services				
329 Professional Educational Services – Other	18,884.25	20,785.04		39,669.29
Total Purchased Professional and Technical Services	\$18,884.25	\$20,785.04		\$39,669.29
400 Purchased Property Services				
430 Repairs and Maintenance Services	118,643.91	82,287.54		200,931.45
440 Rentals	253,775.53	247,552.94		501,328.47
Total Purchased Property Services	\$372,419.44	\$329,840.48		\$702,259.92
500 Other Purchased Services				
550 Printing and Binding		1,286.04		1,286.04
562 Tuition To Pennsylvania Charter Schools	112,249.79	797,064.37		909,314.16
568 Tuition To Private Residential Rehabilitative Institutions (PRRI) [In-State] and Detention Centers	1,945.37	2,107.49		4,052.86
580 Travel	8,999.36	17,831.29		26,830.65
Total Other Purchased Services	\$123,194.52	\$818,289.19		\$941,483.71
600 Supplies				
610 General Supplies	417,255.58	734,745.99	1,197.54	1,153,199.11
620 Energy	128,170.64	232,083.60		360,254.24
640 Books and Periodicals	312,452.87	797,614.15		1,110,067.02
650 Supplies & Fees – Technology Related	71,608.09	99,583.15		171,191.24
Total Supplies	\$929,487.18	\$1,864,026.89	\$1,197.54	\$2,794,711.61
800 Other Objects				
810 Dues and Fees	588.00	6,576.65		7,164.65
Total Other Objects	\$588.00	\$6,576.65		\$7,164.65
Total 1100 Regular Programs – Elementary / Secondary	\$67,118,156.84	\$69,151,577.64	\$964,939.19	\$137,234,673.67

General Fund (10)

1110 Regular Programs

100 Personnel Services – Salaries

	<u>Elementary</u>	<u>Secondary</u>	<u>Federal</u>	<u>Total</u>
100 Personnel Services – Salaries	41,931,609.69	42,361,677.10		84,293,286.79
Total Personnel Services – Salaries	\$41,931,609.69	\$42,361,677.10		\$84,293,286.79

200 Personnel Services – Employee Benefits

210 Group Insurance – Contracted Provider	48,802.49	49,303.03		98,105.52
220 Social Security Contributions	3,096,582.48	3,142,789.51		6,239,371.99
230 PSERS Retirement Contributions	13,618,442.09	13,888,317.42		27,506,759.51
250 Unemployment Compensation	8,480.24	6,930.99		15,411.23
260 Workers' Compensation	352,380.54	306,077.91		658,458.45
270 Group Insurance – Self-Insurance	6,611,627.68	6,350,833.68		12,962,461.36
291 Other Retirement Plans	5,658.24	6,129.75		11,787.99
Total Personnel Services – Employee Benefits	\$23,741,973.76	\$23,750,382.29		\$47,492,356.05

300 Purchased Professional and Technical Services

329 Professional Educational Services – Other	18,884.25	20,785.04		39,669.29
Total Purchased Professional and Technical Services	\$18,884.25	\$20,785.04		\$39,669.29

400 Purchased Property Services

430 Repairs and Maintenance Services	118,643.91	82,287.54		200,931.45
440 Rentals	253,775.53	247,552.94		501,328.47
Total Purchased Property Services	\$372,419.44	\$329,840.48		\$702,259.92

500 Other Purchased Services

550 Printing and Binding		1,286.04		1,286.04
562 Tuition To Pennsylvania Charter Schools	112,249.79	797,064.37		909,314.16
568 Tuition To Private Residential Rehabilitative Institutions (PRRI) [In-State] and Detention Centers	1,945.37	2,107.49		4,052.86
580 Travel	8,999.36	17,831.29		26,830.65
Total Other Purchased Services	\$123,194.52	\$818,289.19		\$941,483.71

600 Supplies

610 General Supplies	417,255.58	734,745.99		1,152,001.57
620 Energy	128,170.64	232,083.60		360,254.24
640 Books and Periodicals	312,452.87	797,614.15		1,110,067.02
650 Supplies & Fees – Technology Related	71,608.09	99,583.15		171,191.24
Total Supplies	\$929,487.18	\$1,864,026.89		\$2,793,514.07

800 Other Objects

810 Dues and Fees	588.00	6,576.65		7,164.65
Total Other Objects	\$588.00	\$6,576.65		\$7,164.65

Total 1110 Regular Programs

Total 1110 Regular Programs	\$67,118,156.84	\$69,151,577.64		\$136,269,734.48
------------------------------------	------------------------	------------------------	--	-------------------------

General Fund (10)

1190 Federally-Funded Regular Programs

Elementary

Secondary

Federal

Total

100 Personnel Services – Salaries

100 Personnel Services – Salaries

667,078.19

667,078.19

Total Personnel Services – Salaries

\$667,078.19

\$667,078.19

200 Personnel Services – Employee Benefits

220 Social Security Contributions

50,764.52

50,764.52

230 PSERS Retirement Contributions

210,188.68

210,188.68

250 Unemployment Compensation

81.22

81.22

260 Workers' Compensation

7,959.67

7,959.67

270 Group Insurance – Self-Insurance

27,669.37

27,669.37

Total Personnel Services – Employee Benefits

\$296,663.46

\$296,663.46

600 Supplies

610 General Supplies

1,197.54

1,197.54

Total Supplies

\$1,197.54

\$1,197.54

Total 1190 Federally-Funded Regular Programs

\$964,939.19

\$964,939.19

General Fund (10)

1200 Special Programs – Elementary / Secondary

	<u>Elementary</u>	<u>Secondary</u>	<u>Federal</u>	<u>Total</u>
100 Personnel Services – Salaries				
100 Personnel Services – Salaries	11,068,199.27	9,684,221.05	1,897,462.87	22,649,883.19
Total Personnel Services – Salaries	\$11,068,199.27	\$9,684,221.05	\$1,897,462.87	\$22,649,883.19
200 Personnel Services – Employee Benefits				
210 Group Insurance – Contracted Provider	13,508.82	12,796.18		26,305.00
220 Social Security Contributions	824,815.12	703,626.44	117,655.25	1,646,096.81
230 PSERS Retirement Contributions	3,724,473.25	3,193,974.03	496,348.06	7,414,795.34
250 Unemployment Compensation	2,759.70	2,178.12	300.13	5,237.95
260 Workers' Compensation	153,780.50	130,847.43	13,811.45	298,439.38
270 Group Insurance – Self-Insurance	2,921,942.11	2,606,135.93	347,827.52	5,875,905.56
291 Other Retirement Plans	2,828.16	3,063.84		5,892.00
Total Personnel Services – Employee Benefits	\$7,644,107.66	\$6,652,621.97	\$975,942.41	\$15,272,672.04
300 Purchased Professional and Technical Services				
322 Professional Educational Services – Ius	464,582.05	464,582.05	53,853.97	983,018.07
329 Professional Educational Services – Other			308,502.52	308,502.52
330 Other Professional Services	1,557,665.71			1,557,665.71
Total Purchased Professional and Technical Services	\$2,022,247.76	\$464,582.05	\$362,356.49	\$2,849,186.30
400 Purchased Property Services				
430 Repairs and Maintenance Services	3,676.89	38.61		3,715.50
440 Rentals	662.25			662.25
Total Purchased Property Services	\$4,339.14	\$38.61		\$4,377.75
500 Other Purchased Services				
562 Tuition To Pennsylvania Charter Schools	100,250.70	390,680.50		490,931.20
567 Tuition To Approved Private Schools (APS) and PA Chartered Schools for the Deaf and Blind	111,289.47	120,563.60		231,853.07
568 Tuition To Private Residential Rehabilitative Institutions (PRRI) [In-State] and Detention Centers	12,854.26	629,858.70		642,712.96
580 Travel	25,683.87	8,028.05	100.00	33,811.92
594 IU Payment By Withholding for Institutionalized Children’s Programs – Special Classes	3,334.20			3,334.20
Total Other Purchased Services	\$253,412.50	\$1,149,130.85	\$100.00	\$1,402,643.35
600 Supplies				
610 General Supplies	95,648.87	52,412.72	45,240.50	193,302.09
620 Energy	9,875.66	10,387.20		20,262.86
640 Books and Periodicals	41,332.53	6,186.58		47,519.11
650 Supplies & Fees – Technology Related	52,276.84	5,727.92	130,379.91	188,384.67
Total Supplies	\$199,133.90	\$74,714.42	\$175,620.41	\$449,468.73
800 Other Objects				
810 Dues and Fees	1,936.00			1,936.00
Total Other Objects	\$1,936.00			\$1,936.00
Total 1200 Special Programs – Elementary / Secondary	\$21,193,376.23	\$18,025,308.95	\$3,411,482.18	\$42,630,167.36

General Fund (10)

1210 Life Skills Support

100 Personnel Services – Salaries

100 Personnel Services – Salaries

Elementary

Secondary

Federal

Total

241,169.04

221,201.92

462,370.96

Total Personnel Services – Salaries

\$241,169.04

\$221,201.92

\$462,370.96

200 Personnel Services – Employee Benefits

210 Group Insurance – Contracted Provider

292.35

268.15

560.50

220 Social Security Contributions

17,106.80

15,585.82

32,692.62

230 PSERS Retirement Contributions

78,483.69

71,299.44

149,783.13

250 Unemployment Compensation

191.88

128.52

320.40

260 Workers' Compensation

6,923.59

4,620.96

11,544.55

270 Group Insurance – Self-Insurance

123,960.84

120,960.95

244,921.79

Total Personnel Services – Employee Benefits

\$226,959.15

\$212,863.84

\$439,822.99

600 Supplies

610 General Supplies

1,948.07

1,193.70

3,141.77

650 Supplies & Fees – Technology Related

1,755.50

1,755.50

3,511.00

Total Supplies

\$3,703.57

\$2,949.20

\$6,652.77

Total 1210 Life Skills Support

\$471,831.76

\$437,014.96

\$908,846.72

General Fund (10)

1220 Sensory Support

	<u>Elementary</u>	<u>Secondary</u>	<u>Federal</u>	<u>Total</u>
100 Personnel Services – Salaries				
100 Personnel Services – Salaries	86,882.02	107,420.95		194,302.97
Total Personnel Services – Salaries	\$86,882.02	\$107,420.95		\$194,302.97
200 Personnel Services – Employee Benefits				
210 Group Insurance – Contracted Provider	89.10	110.17		199.27
220 Social Security Contributions	5,919.92	7,808.68		13,728.60
230 PSERS Retirement Contributions	28,297.50	34,987.03		63,284.53
250 Unemployment Compensation	14.28	14.28		28.56
260 Workers' Compensation	513.09	513.09		1,026.18
270 Group Insurance – Self-Insurance	15,822.44	15,822.44		31,644.88
Total Personnel Services – Employee Benefits	\$50,656.33	\$59,255.69		\$109,912.02
500 Other Purchased Services				
580 Travel		1,028.79		1,028.79
Total Other Purchased Services		\$1,028.79		\$1,028.79
600 Supplies				
610 General Supplies	15,875.12	2,000.60		17,875.72
Total Supplies	\$15,875.12	\$2,000.60		\$17,875.72
Total 1220 Sensory Support	\$153,413.47	\$169,706.03		\$323,119.50

General Fund (10)

1230 Emotional Support

	<u>Elementary</u>	<u>Secondary</u>	<u>Federal</u>	<u>Total</u>
100 Personnel Services – Salaries				
100 Personnel Services – Salaries	1,628,085.13	1,296,015.18		2,924,100.31
Total Personnel Services – Salaries	\$1,628,085.13	\$1,296,015.18		\$2,924,100.31
200 Personnel Services – Employee Benefits				
210 Group Insurance – Contracted Provider	1,780.53	1,417.37		3,197.90
220 Social Security Contributions	116,329.86	93,769.61		210,099.47
230 PSERS Retirement Contributions	529,226.08	422,112.41		951,338.49
250 Unemployment Compensation	810.31	453.01		1,263.32
260 Workers' Compensation	29,134.44	16,240.70		45,375.14
270 Group Insurance – Self-Insurance	603,600.29	371,624.88		975,225.17
Total Personnel Services – Employee Benefits	\$1,280,881.51	\$905,617.98		\$2,186,499.49
600 Supplies				
610 General Supplies	22,714.30	11,631.24		34,345.54
640 Books and Periodicals	34,660.98	1,001.52		35,662.50
650 Supplies & Fees – Technology Related	2,791.77	1,941.78		4,733.55
Total Supplies	\$60,167.05	\$14,574.54		\$74,741.59
Total 1230 Emotional Support	\$2,969,133.69	\$2,216,207.70		\$5,185,341.39

General Fund (10)

1240 Academic Support

100 Personnel Services – Salaries

	<u>Elementary</u>	<u>Secondary</u>	<u>Federal</u>	<u>Total</u>
100 Personnel Services – Salaries	7,359,978.14	6,187,268.62	1,897,462.87	15,444,709.63
Total Personnel Services – Salaries	\$7,359,978.14	\$6,187,268.62	\$1,897,462.87	\$15,444,709.63
200 Personnel Services – Employee Benefits				
210 Group Insurance – Contracted Provider	8,610.19	8,027.26		16,637.45
220 Social Security Contributions	562,171.40	454,345.57	117,655.25	1,134,172.22
230 PSERS Retirement Contributions	2,518,614.71	2,058,218.80	496,348.06	5,073,181.57
250 Unemployment Compensation	374.46	83.26	300.13	757.85
260 Workers' Compensation	68,005.50	55,655.20	13,811.45	137,472.15
270 Group Insurance – Self-Insurance	1,404,552.61	1,165,274.51	347,827.52	2,917,654.64
291 Other Retirement Plans	2,828.16	3,063.84		5,892.00
Total Personnel Services – Employee Benefits	\$4,565,157.03	\$3,744,668.44	\$975,942.41	\$9,285,767.88
300 Purchased Professional and Technical Services				
322 Professional Educational Services – Ius	464,582.05	464,582.05	53,853.97	983,018.07
329 Professional Educational Services – Other			308,502.52	308,502.52
Total Purchased Professional and Technical Services	\$464,582.05	\$464,582.05	\$362,356.49	\$1,291,520.59
500 Other Purchased Services				
568 Tuition To Private Residential Rehabilitative Institutions (PRRI) [In-State] and Detention Centers	12,854.26	629,858.70		642,712.96
580 Travel		6,999.26	100.00	7,099.26
Total Other Purchased Services	\$12,854.26	\$636,857.96	\$100.00	\$649,812.22
600 Supplies				
610 General Supplies	41,238.86	36,022.52	45,240.50	122,501.88
640 Books and Periodicals	3,924.82	5,185.06		9,109.88
650 Supplies & Fees – Technology Related	15,214.82	2,030.64	130,379.91	147,625.37
Total Supplies	\$60,378.50	\$43,238.22	\$175,620.41	\$279,237.13
Total 1240 Academic Support	\$12,462,949.98	\$11,076,615.29	\$3,411,482.18	\$26,951,047.45

General Fund (10)

1241 Learning Support – Public

	<u>Elementary</u>	<u>Secondary</u>	<u>Federal</u>	<u>Total</u>
100 Personnel Services – Salaries				
100 Personnel Services – Salaries	6,478,859.70	6,123,477.22	1,897,462.87	14,499,799.79
Total Personnel Services – Salaries	\$6,478,859.70	\$6,123,477.22	\$1,897,462.87	\$14,499,799.79
200 Personnel Services – Employee Benefits				
210 Group Insurance – Contracted Provider	7,530.52	7,940.37		15,470.89
220 Social Security Contributions	494,925.67	449,750.87	117,655.25	1,062,331.79
230 PSERS Retirement Contributions	2,220,429.43	2,037,701.52	496,348.06	4,754,479.01
250 Unemployment Compensation	207.33	71.01	300.13	578.47
260 Workers' Compensation	62,147.81	55,214.53	13,811.45	131,173.79
270 Group Insurance – Self-Insurance	1,253,236.94	1,154,578.82	347,827.52	2,755,643.28
291 Other Retirement Plans	2,333.23	3,024.01		5,357.24
Total Personnel Services – Employee Benefits	\$4,040,810.93	\$3,708,281.13	\$975,942.41	\$8,725,034.47
300 Purchased Professional and Technical Services				
322 Professional Educational Services – Ius	464,582.05	464,582.05	53,853.97	983,018.07
329 Professional Educational Services – Other			308,502.52	308,502.52
Total Purchased Professional and Technical Services	\$464,582.05	\$464,582.05	\$362,356.49	\$1,291,520.59
500 Other Purchased Services				
568 Tuition To Private Residential Rehabilitative Institutions (PRRI) [In-State] and Detention Centers	12,854.26	629,858.70		642,712.96
580 Travel		6,999.26	100.00	7,099.26
Total Other Purchased Services	\$12,854.26	\$636,857.96	\$100.00	\$649,812.22
600 Supplies				
610 General Supplies	37,096.14	36,022.52	45,240.50	118,359.16
640 Books and Periodicals	3,265.18	5,185.06		8,450.24
650 Supplies & Fees – Technology Related	15,214.82	2,030.64	130,379.91	147,625.37
Total Supplies	\$55,576.14	\$43,238.22	\$175,620.41	\$274,434.77
Total 1241 Learning Support – Public	\$11,052,683.08	\$10,976,436.58	\$3,411,482.18	\$25,440,601.84

General Fund (10)

1243 Gifted Support

	<u>Elementary</u>	<u>Secondary</u>	<u>Federal</u>	<u>Total</u>
100 Personnel Services – Salaries				
100 Personnel Services – Salaries	881,118.44	63,791.40		944,909.84
Total Personnel Services – Salaries	\$881,118.44	\$63,791.40		\$944,909.84
200 Personnel Services – Employee Benefits				
210 Group Insurance – Contracted Provider	1,079.67	86.89		1,166.56
220 Social Security Contributions	67,245.73	4,594.70		71,840.43
230 PSERS Retirement Contributions	298,185.28	20,517.28		318,702.56
250 Unemployment Compensation	167.13	12.25		179.38
260 Workers' Compensation	5,857.69	440.67		6,298.36
270 Group Insurance – Self-Insurance	151,315.67	10,695.69		162,011.36
291 Other Retirement Plans	494.93	39.83		534.76
Total Personnel Services – Employee Benefits	\$524,346.10	\$36,387.31		\$560,733.41
600 Supplies				
610 General Supplies	4,142.72			4,142.72
640 Books and Periodicals	659.64			659.64
Total Supplies	\$4,802.36			\$4,802.36
Total 1243 Gifted Support	\$1,410,266.90	\$100,178.71		\$1,510,445.61

General Fund (10)

1270 Multi-Handicapped Support

100 Personnel Services – Salaries

	<u>Elementary</u>	<u>Secondary</u>	<u>Federal</u>	<u>Total</u>
100 Personnel Services – Salaries	150,976.29	57,132.61		208,108.90
Total Personnel Services – Salaries	\$150,976.29	\$57,132.61		\$208,108.90

200 Personnel Services – Employee Benefits

210 Group Insurance – Contracted Provider	171.20	64.78		235.98
220 Social Security Contributions	10,361.91	4,095.99		14,457.90
230 PSERS Retirement Contributions	48,846.80	18,608.12		67,454.92
250 Unemployment Compensation	59.64	42.18		101.82
260 Workers' Compensation	2,140.77	1,516.79		3,657.56
270 Group Insurance – Self-Insurance	63,289.76	23,647.10		86,936.86
Total Personnel Services – Employee Benefits	\$124,870.08	\$47,974.96		\$172,845.04

600 Supplies

610 General Supplies	292.93	1,394.57		1,687.50
Total Supplies	\$292.93	\$1,394.57		\$1,687.50

Total 1270 Multi-Handicapped Support	\$276,139.30	\$106,502.14		\$382,641.44
---------------------------------------------	---------------------	---------------------	--	---------------------

General Fund (10)

1290 Special Programs - Other Support

100 Personnel Services – Salaries

	<u>Elementary</u>	<u>Secondary</u>	<u>Federal</u>	<u>Total</u>
100 Personnel Services – Salaries	1,601,108.65	1,815,181.77		3,416,290.42
Total Personnel Services – Salaries	\$1,601,108.65	\$1,815,181.77		\$3,416,290.42

200 Personnel Services – Employee Benefits

210 Group Insurance – Contracted Provider	2,565.45	2,908.45		5,473.90
220 Social Security Contributions	112,925.23	128,020.77		240,946.00
230 PSERS Retirement Contributions	521,004.47	588,748.23		1,109,752.70
250 Unemployment Compensation	1,309.13	1,456.87		2,766.00
260 Workers' Compensation	47,063.11	52,300.69		99,363.80
270 Group Insurance – Self-Insurance	710,716.17	908,806.05		1,619,522.22
Total Personnel Services – Employee Benefits	\$1,395,583.56	\$1,682,241.06		\$3,077,824.62

300 Purchased Professional and Technical Services

330 Other Professional Services	1,557,665.71			1,557,665.71
Total Purchased Professional and Technical Services	\$1,557,665.71			\$1,557,665.71

400 Purchased Property Services

430 Repairs and Maintenance Services	3,676.89	38.61		3,715.50
440 Rentals	662.25			662.25
Total Purchased Property Services	\$4,339.14	\$38.61		\$4,377.75

500 Other Purchased Services

562 Tuition To Pennsylvania Charter Schools	100,250.70	390,680.50		490,931.20
567 Tuition To Approved Private Schools (APS) and PA Chartered Schools for the Deaf and Blind	111,289.47	120,563.60		231,853.07
580 Travel	25,683.87			25,683.87
594 IU Payment By Withholding for Institutionalized Children's Programs – Special Classes	3,334.20			3,334.20
Total Other Purchased Services	\$240,558.24	\$511,244.10		\$751,802.34

600 Supplies

610 General Supplies	13,579.59	170.09		13,749.68
620 Energy	9,875.66	10,387.20		20,262.86
640 Books and Periodicals	2,746.73			2,746.73
650 Supplies & Fees – Technology Related	32,514.75			32,514.75
Total Supplies	\$58,716.73	\$10,557.29		\$69,274.02

800 Other Objects

810 Dues and Fees	1,936.00			1,936.00
Total Other Objects	\$1,936.00			\$1,936.00

Total 1290 Special Programs - Other Support

Total 1290 Special Programs - Other Support	\$4,859,908.03	\$4,019,262.83		\$8,879,170.86
----------------------------------------------------	-----------------------	-----------------------	--	-----------------------

REVISED SUBMISSION

General Fund (10)

1300 Vocational Education

500 Other Purchased Services

564 Tuition To Career and Technology Centers

Total Other Purchased Services

Total 1300 Vocational Education

<u>Elementary</u>	<u>Secondary</u>	<u>Federal</u>	<u>Total</u>
	4,623,029.28		4,623,029.28
	\$4,623,029.28		\$4,623,029.28
	\$4,623,029.28		\$4,623,029.28

General Fund (10)

1400 Other Instructional Programs – Elementary / Secondary

	<u>Elementary</u>	<u>Secondary</u>	<u>Federal</u>	<u>Total</u>
100 Personnel Services – Salaries				
100 Personnel Services – Salaries	481,994.78	266,036.91		748,031.69
Total Personnel Services – Salaries	\$481,994.78	\$266,036.91		\$748,031.69
200 Personnel Services – Employee Benefits				
210 Group Insurance – Contracted Provider	406.57	440.46		847.03
220 Social Security Contributions	35,682.05	20,170.14		55,852.19
230 PSERS Retirement Contributions	156,484.30	82,063.08		238,547.38
250 Unemployment Compensation	134.99	54.89		189.88
260 Workers' Compensation	4,835.77	1,983.46		6,819.23
270 Group Insurance – Self-Insurance	79,515.11	43,281.13		122,796.24
Total Personnel Services – Employee Benefits	\$277,058.79	\$147,993.16		\$425,051.95
300 Purchased Professional and Technical Services				
329 Professional Educational Services – Other		60,781.00		60,781.00
Total Purchased Professional and Technical Services		\$60,781.00		\$60,781.00
500 Other Purchased Services				
561 Tuition To Other School Districts Within the State		27,639.45		27,639.45
569 Tuition – Other		2,304,142.98		2,304,142.98
580 Travel	4,028.20	6,776.20		10,804.40
Total Other Purchased Services	\$4,028.20	\$2,338,558.63		\$2,342,586.83
600 Supplies				
610 General Supplies	1,618.74			1,618.74
640 Books and Periodicals	15,982.32			15,982.32
Total Supplies	\$17,601.06			\$17,601.06
Total 1400 Other Instructional Programs – Elementary / Secondary	\$780,682.83	\$2,813,369.70		\$3,594,052.53

REVISED SUBMISSION

General Fund (10)

1420 Summer School

100 Personnel Services – Salaries

100 Personnel Services – Salaries

Total Personnel Services – Salaries

200 Personnel Services – Employee Benefits

220 Social Security Contributions

230 PSERS Retirement Contributions

Total Personnel Services – Employee Benefits

Total 1420 Summer School

Elementary

Secondary

Federal

Total

1,909.44

1,909.44

\$1,909.44

\$1,909.44

146.08

146.08

621.90

621.90

\$767.98

\$767.98

\$2,677.42

\$2,677.42

General Fund (10)

1430 Homebound Instruction

100 Personnel Services – Salaries

100 Personnel Services – Salaries

Elementary

Secondary

Federal

Total

11,458.56

41,687.32

53,145.88

Total Personnel Services – Salaries

\$11,458.56

\$41,687.32

\$53,145.88

200 Personnel Services – Employee Benefits

220 Social Security Contributions

868.90

3,166.01

4,034.91

230 PSERS Retirement Contributions

3,263.03

8,992.37

12,255.40

250 Unemployment Compensation

16.80

16.80

260 Workers' Compensation

613.60

613.60

Total Personnel Services – Employee Benefits

\$4,131.93

\$12,788.78

\$16,920.71

300 Purchased Professional and Technical Services

329 Professional Educational Services – Other

60,781.00

60,781.00

Total Purchased Professional and Technical Services

\$60,781.00

\$60,781.00

500 Other Purchased Services

580 Travel

6,776.20

6,776.20

Total Other Purchased Services

\$6,776.20

\$6,776.20

Total 1430 Homebound Instruction

\$15,590.49

\$122,033.30

\$137,623.79

REVISED SUBMISSION

General Fund (10)

1440 Alternative Regular Education Programs

Elementary

Secondary

Federal

Total

500 Other Purchased Services

561 Tuition To Other School Districts Within the State

27,639.45

27,639.45

569 Tuition – Other

2,304,142.98

2,304,142.98

Total Other Purchased Services

\$2,331,782.43

\$2,331,782.43

Total 1440 Alternative Regular Education Programs

\$2,331,782.43

\$2,331,782.43

LEA : 122092102 Central Bucks SD

Printed 4/23/2019 4:10:48 PM

REVISED SUBMISSION

General Fund (10)

1441 Adjudicated / Court-Placed Programs

500 Other Purchased Services

561 Tuition To Other School Districts Within the State

569 Tuition - Other

Total Other Purchased Services

Total 1441 Adjudicated / Court-Placed Programs

Elementary

Secondary

Federal

Total

27,639.45

27,639.45

127,373.86

127,373.86

\$155,013.31

\$155,013.31

\$155,013.31

\$155,013.31

REVISED SUBMISSION

General Fund (10)

1442 Alternative Education Programs

500 Other Purchased Services

569 Tuition - Other

Total Other Purchased Services

Total 1442 Alternative Education Programs

Elementary

Secondary

Federal

Total

2,176,769.12

2,176,769.12

\$2,176,769.12

\$2,176,769.12

\$2,176,769.12

\$2,176,769.12

General Fund (10)

1490 Additional Other Instructional Programs

100 Personnel Services – Salaries

	<u>Elementary</u>	<u>Secondary</u>	<u>Federal</u>	<u>Total</u>
100 Personnel Services – Salaries	470,536.22	222,440.15		692,976.37

Total Personnel Services – Salaries

	\$470,536.22	\$222,440.15		\$692,976.37
--	---------------------	---------------------	--	---------------------

200 Personnel Services – Employee Benefits

210 Group Insurance – Contracted Provider	406.57	440.46		847.03
220 Social Security Contributions	34,813.15	16,858.05		51,671.20
230 PSERS Retirement Contributions	153,221.27	72,448.81		225,670.08
250 Unemployment Compensation	134.99	38.09		173.08
260 Workers' Compensation	4,835.77	1,369.86		6,205.63
270 Group Insurance – Self-Insurance	79,515.11	43,281.13		122,796.24

Total Personnel Services – Employee Benefits

	\$272,926.86	\$134,436.40		\$407,363.26
--	---------------------	---------------------	--	---------------------

500 Other Purchased Services

580 Travel	4,028.20			4,028.20
------------	----------	--	--	----------

Total Other Purchased Services

	\$4,028.20			\$4,028.20
--	-------------------	--	--	-------------------

600 Supplies

610 General Supplies	1,618.74			1,618.74
640 Books and Periodicals	15,982.32			15,982.32

Total Supplies

	\$17,601.06			\$17,601.06
--	--------------------	--	--	--------------------

Total 1490 Additional Other Instructional Programs

	\$765,092.34	\$356,876.55		\$1,121,968.89
--	---------------------	---------------------	--	-----------------------

REVISED SUBMISSION

General Fund (10)

1500 Nonpublic School Programs

Elementary

Secondary

Federal

Total

300 Purchased Professional and Technical Services

322 Professional Educational Services – Ius

19,435.00

Total Purchased Professional and Technical Services

\$19,435.00

500 Other Purchased Services

592 Services Purchased From Another LEA Within the State

16,404.00

Total Other Purchased Services

\$16,404.00

Total 1500 Nonpublic School Programs

\$35,839.00

General Fund (10)

2000 Support Services

Total

100 Personnel Services – Salaries

100 Personnel Services – Salaries 43,623,566.85

Total Personnel Services – Salaries

\$43,623,566.85

200 Personnel Services – Employee Benefits

210 Group Insurance – Contracted Provider 49,681.13

220 Social Security Contributions 3,207,435.62

230 PSERS Retirement Contributions 14,112,249.25

240 Tuition Reimbursement 280,484.49

250 Unemployment Compensation 9,111.26

260 Workers' Compensation 436,026.65

270 Group Insurance – Self-Insurance 9,213,510.78

291 Other Retirement Plans 213,185.97

299 All Other Employee Benefits 11,784.00

Total Personnel Services – Employee Benefits

\$27,533,469.15

300 Purchased Professional and Technical Services

310 Official / Administrative Services 734,818.12

323 Professional Educational Services – Other Educational Agencies 846.60

324 Professional Educational Services – Employee Training and Development Services 1,632.75

329 Professional Educational Services – Other 35,391.95

330 Other Professional Services 677,171.70

340 Technical Services 199,161.97

350 Security / Safety Services 74,836.70

Total Purchased Professional and Technical Services

\$1,723,859.79

400 Purchased Property Services

410 Cleaning Services 696,022.59

420 Utility Services 2,527,395.98

430 Repairs and Maintenance Services 2,170,715.81

440 Rentals 78,878.92

460 Extermination Services 24,000.00

490 Other Purchased Property Services 151,000.97

Total Purchased Property Services

\$5,648,014.27

500 Other Purchased Services

511 Student Transportation Services from Another LEA Within the State 185,196.60

513 Contracted Carriers 7,537,519.68

516 Student Transportation Services From the IU 533,493.66

520 Insurance – General 218,077.50

521 Fire Insurance 355,659.00

522 Automotive Liability Insurance 205,324.00

523 General Property and Liability Insurance 262,224.00

529 Other Insurance 17,571.76

530 Communications 762,158.98

541 Advertising Related to Federal Grant Awards 130.27

549 Other Advertising/Public Relations 22,141.98

550 Printing and Binding 8,969.00

General Fund (10)

2000 Support Services

Total

500 Other Purchased Services

580 Travel	146,429.68
591 Services Purchased Locally	383.68
595 IU Payments By Withholding	137,672.44
596 Direct Payments To Intermediate Units	85,430.00

Total Other Purchased Services	\$10,478,382.23
---------------------------------------	------------------------

600 Supplies

610 General Supplies	2,135,693.97
620 Energy	1,088,360.22
630 Food	48,514.39
640 Books and Periodicals	104,730.14
650 Supplies & Fees – Technology Related	620,650.65

Total Supplies	\$3,997,949.37
-----------------------	-----------------------

700 Property

752 Capital Equipment – Original and Additional	13,070.00
762 Capitalized Equipment - Replacement	31,418.30
768 Capitalized Technology Software - Replacement	21,452.02

Total Property	\$65,940.32
-----------------------	--------------------

800 Other Objects

810 Dues and Fees	51,495.18
-------------------	-----------

Total Other Objects	\$51,495.18
----------------------------	--------------------

Total 2000 Support Services	\$93,122,677.16
------------------------------------	------------------------

General Fund (10)

2100 Support Services – Students

100 Personnel Services – Salaries

100 Personnel Services – Salaries

Elementary

Secondary

Federal

Total

3,999,283.54

4,039,747.08

8,362,353.78

Total Personnel Services – Salaries

\$3,999,283.54

\$4,039,747.08

\$8,362,353.78

200 Personnel Services – Employee Benefits

210 Group Insurance – Contracted Provider

4,662.57

4,645.20

9,762.02

220 Social Security Contributions

289,918.22

294,322.56

606,766.25

230 PSERS Retirement Contributions

1,292,093.73

1,303,395.26

2,700,795.56

250 Unemployment Compensation

708.73

784.43

1,652.24

260 Workers' Compensation

25,474.31

28,189.28

59,366.60

270 Group Insurance – Self-Insurance

714,922.62

659,881.70

1,543,519.63

291 Other Retirement Plans

4,584.56

4,966.59

9,551.15

Total Personnel Services – Employee Benefits

\$2,332,364.74

\$2,296,185.02

\$4,931,413.45

300 Purchased Professional and Technical Services

329 Professional Educational Services – Other

10,127.50

10,127.50

330 Other Professional Services

41,210.72

27,257.45

68,468.17

Total Purchased Professional and Technical Services

\$41,210.72

\$37,384.95

\$78,595.67

400 Purchased Property Services

430 Repairs and Maintenance Services

21.89

23.71

45.60

Total Purchased Property Services

\$21.89

\$23.71

\$45.60

500 Other Purchased Services

530 Communications

495.00

495.00

580 Travel

1,270.24

766.27

2,036.51

Total Other Purchased Services

\$1,270.24

\$1,261.27

\$2,531.51

600 Supplies

610 General Supplies

36,849.32

21,352.75

58,202.07

630 Food

44.09

47.77

91.86

640 Books and Periodicals

753.10

351.50

1,104.60

650 Supplies & Fees – Technology Related

8,813.50

5,086.15

13,899.65

Total Supplies

\$46,460.01

\$26,838.17

\$73,298.18

800 Other Objects

810 Dues and Fees

22.56

24.44

47.00

Total Other Objects

\$22.56

\$24.44

\$47.00

Total 2100 Support Services – Students

\$6,420,633.70

\$6,401,464.64

\$13,448,285.19

General Fund (10)

	<u>Elementary</u>	<u>Secondary</u>	<u>Federal</u>	<u>Total</u>
2110 Supervision of Student Services				
100 Personnel Services – Salaries				
100 Personnel Services – Salaries	88,817.48	96,218.93		185,036.41
Total Personnel Services – Salaries	\$88,817.48	\$96,218.93		\$185,036.41
200 Personnel Services – Employee Benefits				
210 Group Insurance – Contracted Provider	92.38	100.08		192.46
220 Social Security Contributions	4,933.23	5,344.34		10,277.57
230 PSERS Retirement Contributions	24,126.69	26,137.24		50,263.93
250 Unemployment Compensation	6.85	7.43		14.28
260 Workers' Compensation	246.28	266.81		513.09
270 Group Insurance – Self-Insurance	7,594.77	8,227.67		15,822.44
291 Other Retirement Plans	1,501.24	1,626.33		3,127.57
Total Personnel Services – Employee Benefits	\$38,501.44	\$41,709.90		\$80,211.34
600 Supplies				
610 General Supplies	19.34	20.96		40.30
Total Supplies	\$19.34	\$20.96		\$40.30
800 Other Objects				
810 Dues and Fees	22.56	24.44		47.00
Total Other Objects	\$22.56	\$24.44		\$47.00
Total 2110 Supervision of Student Services	\$127,360.82	\$137,974.23		\$265,335.05

General Fund (10)

	<u>Elementary</u>	<u>Secondary</u>	<u>Federal</u>	<u>Total</u>
2111 Supervision of Student Services – Head of Component				
100 Personnel Services – Salaries				
100 Personnel Services – Salaries	88,817.48	96,218.93		185,036.41
Total Personnel Services – Salaries	\$88,817.48	\$96,218.93		\$185,036.41
200 Personnel Services – Employee Benefits				
210 Group Insurance – Contracted Provider	92.38	100.08		192.46
220 Social Security Contributions	4,933.23	5,344.34		10,277.57
230 PSERS Retirement Contributions	24,126.69	26,137.24		50,263.93
250 Unemployment Compensation	6.85	7.43		14.28
260 Workers' Compensation	246.28	266.81		513.09
270 Group Insurance – Self-Insurance	7,594.77	8,227.67		15,822.44
291 Other Retirement Plans	1,501.24	1,626.33		3,127.57
Total Personnel Services – Employee Benefits	\$38,501.44	\$41,709.90		\$80,211.34
600 Supplies				
610 General Supplies	19.34	20.96		40.30
Total Supplies	\$19.34	\$20.96		\$40.30
800 Other Objects				
810 Dues and Fees	22.56	24.44		47.00
Total Other Objects	\$22.56	\$24.44		\$47.00
Total 2111 Supervision of Student Services – Head of Component	\$127,360.82	\$137,974.23		\$265,335.05

General Fund (10)

2120 Guidance Services

100 Personnel Services – Salaries

100 Personnel Services – Salaries

Elementary

Secondary

Federal

Total

1,698,708.06

3,074,037.07

4,772,745.13

Total Personnel Services – Salaries

\$1,698,708.06

\$3,074,037.07

\$4,772,745.13

200 Personnel Services – Employee Benefits

210 Group Insurance – Contracted Provider

1,947.09

3,523.52

5,470.61

220 Social Security Contributions

125,588.74

226,970.71

352,559.45

230 PSERS Retirement Contributions

552,748.31

999,031.56

1,551,779.87

250 Unemployment Compensation

274.24

615.81

890.05

260 Workers' Compensation

9,858.62

22,129.78

31,988.40

270 Group Insurance – Self-Insurance

287,379.70

497,102.30

784,482.00

Total Personnel Services – Employee Benefits

\$977,796.70

\$1,749,373.68

\$2,727,170.38

300 Purchased Professional and Technical Services

329 Professional Educational Services – Other

10,127.50

10,127.50

Total Purchased Professional and Technical Services

\$10,127.50

\$10,127.50

500 Other Purchased Services

530 Communications

495.00

495.00

580 Travel

158.23

286.33

444.56

Total Other Purchased Services

\$158.23

\$781.33

\$939.56

600 Supplies

610 General Supplies

11,369.14

9,762.26

21,131.40

Total Supplies

\$11,369.14

\$9,762.26

\$21,131.40

Total 2120 Guidance Services

\$2,688,032.13

\$4,844,081.84

\$7,532,113.97

REVISED SUBMISSION

General Fund (10)

2130 Attendance Services

Elementary

Secondary

Federal

Total

100 Personnel Services – Salaries

100 Personnel Services – Salaries

323,323.16

Total Personnel Services – Salaries

\$323,323.16

200 Personnel Services – Employee Benefits

210 Group Insurance – Contracted Provider

454.25

220 Social Security Contributions

22,525.47

230 PSERS Retirement Contributions

105,306.57

250 Unemployment Compensation

159.08

260 Workers' Compensation

5,703.01

270 Group Insurance – Self-Insurance

168,715.31

Total Personnel Services – Employee Benefits

\$302,863.69

Total 2130 Attendance Services

\$626,186.85

General Fund (10)

2140 Psychological Services

	<u>Elementary</u>	<u>Secondary</u>	<u>Federal</u>	<u>Total</u>
100 Personnel Services – Salaries				
100 Personnel Services – Salaries	886,666.31	382,677.16		1,269,343.47
Total Personnel Services – Salaries	\$886,666.31	\$382,677.16		\$1,269,343.47
200 Personnel Services – Employee Benefits				
210 Group Insurance – Contracted Provider	1,058.93	457.02		1,515.95
220 Social Security Contributions	64,735.94	27,721.31		92,457.25
230 PSERS Retirement Contributions	288,284.99	124,589.01		412,874.00
250 Unemployment Compensation	160.32	65.64		225.96
260 Workers' Compensation	5,760.84	2,360.19		8,121.03
270 Group Insurance – Self-Insurance	168,960.88	72,783.22		241,744.10
Total Personnel Services – Employee Benefits	\$528,961.90	\$227,976.39		\$756,938.29
300 Purchased Professional and Technical Services				
330 Other Professional Services	16,050.00			16,050.00
Total Purchased Professional and Technical Services	\$16,050.00			\$16,050.00
500 Other Purchased Services				
580 Travel	1,112.01	479.94		1,591.95
Total Other Purchased Services	\$1,112.01	\$479.94		\$1,591.95
600 Supplies				
610 General Supplies	24,569.60	10,604.01		35,173.61
640 Books and Periodicals	712.49	307.51		1,020.00
650 Supplies & Fees – Technology Related	6,845.98	2,954.67		9,800.65
Total Supplies	\$32,128.07	\$13,866.19		\$45,994.26
Total 2140 Psychological Services	\$1,464,918.29	\$624,999.68		\$2,089,917.97

General Fund (10)

2150 Speech Pathology and Audiology Services

	<u>Elementary</u>	<u>Secondary</u>	<u>Federal</u>	<u>Total</u>
100 Personnel Services – Salaries				
100 Personnel Services – Salaries	1,117,079.37	261,467.23		1,378,546.60
Total Personnel Services – Salaries	\$1,117,079.37	\$261,467.23		\$1,378,546.60
200 Personnel Services – Employee Benefits				
210 Group Insurance – Contracted Provider	1,311.80	291.18		1,602.98
220 Social Security Contributions	81,068.48	19,561.71		100,630.19
230 PSERS Retirement Contributions	363,723.65	85,159.85		448,883.50
250 Unemployment Compensation	233.05	58.42		291.47
260 Workers' Compensation	8,377.15	2,098.47		10,475.62
270 Group Insurance – Self-Insurance	220,608.19	48,857.83		269,466.02
Total Personnel Services – Employee Benefits	\$675,322.32	\$156,027.46		\$831,349.78
Total 2150 Speech Pathology and Audiology Services	\$1,792,401.69	\$417,494.69		\$2,209,896.38

General Fund (10)

2190 Other Student Services

	<u>Elementary</u>	<u>Secondary</u>	<u>Federal</u>	<u>Total</u>
100 Personnel Services – Salaries				
100 Personnel Services – Salaries	208,012.32	225,346.69		433,359.01
Total Personnel Services – Salaries	\$208,012.32	\$225,346.69		\$433,359.01
200 Personnel Services – Employee Benefits				
210 Group Insurance – Contracted Provider	252.37	273.40		525.77
220 Social Security Contributions	13,591.83	14,724.49		28,316.32
230 PSERS Retirement Contributions	63,210.09	68,477.60		131,687.69
250 Unemployment Compensation	34.27	37.13		71.40
260 Workers' Compensation	1,231.42	1,334.03		2,565.45
270 Group Insurance – Self-Insurance	30,379.08	32,910.68		63,289.76
291 Other Retirement Plans	3,083.32	3,340.26		6,423.58
Total Personnel Services – Employee Benefits	\$111,782.38	\$121,097.59		\$232,879.97
300 Purchased Professional and Technical Services				
330 Other Professional Services	25,160.72	27,257.45		52,418.17
Total Purchased Professional and Technical Services	\$25,160.72	\$27,257.45		\$52,418.17
400 Purchased Property Services				
430 Repairs and Maintenance Services	21.89	23.71		45.60
Total Purchased Property Services	\$21.89	\$23.71		\$45.60
600 Supplies				
610 General Supplies	891.24	965.52		1,856.76
630 Food	44.09	47.77		91.86
640 Books and Periodicals	40.61	43.99		84.60
650 Supplies & Fees – Technology Related	1,967.52	2,131.48		4,099.00
Total Supplies	\$2,943.46	\$3,188.76		\$6,132.22
Total 2190 Other Student Services	\$347,920.77	\$376,914.20		\$724,834.97

General Fund (10)

2200 Support Services – Instructional Staff

100 Personnel Services – Salaries

	<u>Elementary</u>	<u>Secondary</u>	<u>Federal</u>	<u>Total</u>
100 Personnel Services – Salaries	3,751,729.01	3,027,192.07		6,778,921.08
Total Personnel Services – Salaries	\$3,751,729.01	\$3,027,192.07		\$6,778,921.08

200 Personnel Services – Employee Benefits

210 Group Insurance – Contracted Provider	4,373.86	3,474.32		7,848.18
220 Social Security Contributions	276,911.45	223,520.54		500,431.99
230 PSERS Retirement Contributions	1,211,987.37	975,087.96		2,187,075.33
240 Tuition Reimbursement	108,099.06	117,107.31		225,206.37
250 Unemployment Compensation	829.94	594.91		1,424.85
260 Workers' Compensation	29,802.52	21,373.64		51,176.16
270 Group Insurance – Self-Insurance	641,257.39	471,980.21		1,113,237.60
291 Other Retirement Plans	17,467.38	19,121.11		36,588.49
Total Personnel Services – Employee Benefits	\$2,290,728.97	\$1,832,260.00		\$4,122,988.97

300 Purchased Professional and Technical Services

329 Professional Educational Services – Other	10,839.50	14,070.00		24,909.50
330 Other Professional Services		1,643.75		1,643.75
340 Technical Services	21,448.83	23,236.24		44,685.07
Total Purchased Professional and Technical Services	\$32,288.33	\$38,949.99		\$71,238.32

400 Purchased Property Services

430 Repairs and Maintenance Services	16,694.63	60,123.30		76,817.93
Total Purchased Property Services	\$16,694.63	\$60,123.30		\$76,817.93

500 Other Purchased Services

530 Communications	29,335.56	31,780.18		61,115.74
580 Travel	10,634.36	25,527.50	45,897.16	82,059.02
Total Other Purchased Services	\$39,969.92	\$57,307.68	\$45,897.16	\$143,174.76

600 Supplies

610 General Supplies	34,731.35	43,673.47		78,404.82
630 Food	867.97	1,994.38		2,862.35
640 Books and Periodicals	52,351.02	46,173.15		98,524.17
650 Supplies & Fees – Technology Related	413,146.57	120,744.22		533,890.79
Total Supplies	\$501,096.91	\$212,585.22		\$713,682.13

800 Other Objects

810 Dues and Fees	232.94	2,465.73		2,698.67
Total Other Objects	\$232.94	\$2,465.73		\$2,698.67

Total 2200 Support Services – Instructional Staff

Total 2200 Support Services – Instructional Staff	\$6,632,740.71	\$5,230,883.99	\$45,897.16	\$11,909,521.86
----------------------------------------------------------	-----------------------	-----------------------	--------------------	------------------------

General Fund (10)

2220 Technology Support Services

100 Personnel Services – Salaries

	<u>Elementary</u>	<u>Secondary</u>	<u>Federal</u>	<u>Total</u>
100 Personnel Services – Salaries	61,142.34	79,037.53		140,179.87
Total Personnel Services – Salaries	\$61,142.34	\$79,037.53		\$140,179.87

200 Personnel Services – Employee Benefits

210 Group Insurance – Contracted Provider	76.28	82.63		158.91
220 Social Security Contributions	4,286.31	5,604.67		9,890.98
230 PSERS Retirement Contributions	19,914.02	25,742.49		45,656.51
250 Unemployment Compensation	9.33	12.07		21.40
260 Workers' Compensation	335.66	433.91		769.57
270 Group Insurance – Self-Insurance	10,351.91	13,381.72		23,733.63
291 Other Retirement Plans	946.35	1,223.34		2,169.69
Total Personnel Services – Employee Benefits	\$35,919.86	\$46,480.83		\$82,400.69

600 Supplies

610 General Supplies	10,944.79	7,783.13		18,727.92
Total Supplies	\$10,944.79	\$7,783.13		\$18,727.92

Total 2220 Technology Support Services

	\$108,006.99	\$133,301.49		\$241,308.48
--	---------------------	---------------------	--	---------------------

General Fund (10)

2240 Computer-Assisted Instruction Support Services

	<u>Elementary</u>	<u>Secondary</u>	<u>Federal</u>	<u>Total</u>
100 Personnel Services – Salaries				
100 Personnel Services – Salaries	575,230.25	624,808.95		1,200,039.20
Total Personnel Services – Salaries	\$575,230.25	\$624,808.95		\$1,200,039.20
200 Personnel Services – Employee Benefits				
210 Group Insurance – Contracted Provider	713.70	773.18		1,486.88
220 Social Security Contributions	42,642.90	46,322.14		88,965.04
230 PSERS Retirement Contributions	180,340.82	195,369.22		375,710.04
250 Unemployment Compensation	169.70	185.35		355.05
260 Workers' Compensation	6,105.26	6,674.94		12,780.20
270 Group Insurance – Self-Insurance	101,407.88	109,858.53		211,266.41
291 Other Retirement Plans	1,727.36	1,871.30		3,598.66
Total Personnel Services – Employee Benefits	\$333,107.62	\$361,054.66		\$694,162.28
300 Purchased Professional and Technical Services				
340 Technical Services	15,688.83	16,996.24		32,685.07
Total Purchased Professional and Technical Services	\$15,688.83	\$16,996.24		\$32,685.07
400 Purchased Property Services				
430 Repairs and Maintenance Services	16,512.00	59,925.45		76,437.45
Total Purchased Property Services	\$16,512.00	\$59,925.45		\$76,437.45
500 Other Purchased Services				
530 Communications	29,335.56	31,780.18		61,115.74
580 Travel	5,583.54	6,048.84		11,632.38
Total Other Purchased Services	\$34,919.10	\$37,829.02		\$72,748.12
600 Supplies				
610 General Supplies	12,495.99	32,272.48		44,768.47
650 Supplies & Fees – Technology Related	48,394.57	88,570.17		136,964.74
Total Supplies	\$60,890.56	\$120,842.65		\$181,733.21
Total 2240 Computer-Assisted Instruction Support Services	\$1,036,348.36	\$1,221,456.97		\$2,257,805.33

General Fund (10)

2250 School Library Services

	<u>Elementary</u>	<u>Secondary</u>	<u>Federal</u>	<u>Total</u>
100 Personnel Services – Salaries				
100 Personnel Services – Salaries	1,807,689.65	794,339.27		2,602,028.92
Total Personnel Services – Salaries	\$1,807,689.65	\$794,339.27		\$2,602,028.92
200 Personnel Services – Employee Benefits				
210 Group Insurance – Contracted Provider	1,963.82	862.95		2,826.77
220 Social Security Contributions	133,842.77	59,243.41		193,086.18
230 PSERS Retirement Contributions	587,670.11	258,679.52		846,349.63
250 Unemployment Compensation	454.44	184.80		639.24
260 Workers' Compensation	16,318.37	6,640.70		22,959.07
270 Group Insurance – Self-Insurance	343,920.59	147,908.30		491,828.89
Total Personnel Services – Employee Benefits	\$1,084,170.10	\$473,519.68		\$1,557,689.78
600 Supplies				
610 General Supplies	10,305.78	2,706.53		13,012.31
640 Books and Periodicals	50,065.97	44,063.87		94,129.84
650 Supplies & Fees – Technology Related		16,203.47		16,203.47
Total Supplies	\$60,371.75	\$62,973.87		\$123,345.62
800 Other Objects				
810 Dues and Fees		1,500.70		1,500.70
Total Other Objects		\$1,500.70		\$1,500.70
Total 2250 School Library Services	\$2,952,231.50	\$1,332,333.52		\$4,284,565.02

General Fund (10)

2260 Instruction and Curriculum Development Services

	<u>Elementary</u>	<u>Secondary</u>	<u>Federal</u>	<u>Total</u>
100 Personnel Services – Salaries				
100 Personnel Services – Salaries	564,501.80	723,555.06		1,288,056.86
Total Personnel Services – Salaries	\$564,501.80	\$723,555.06		\$1,288,056.86
200 Personnel Services – Employee Benefits				
210 Group Insurance – Contracted Provider	773.29	837.74		1,611.03
220 Social Security Contributions	40,927.59	52,533.91		93,461.50
230 PSERS Retirement Contributions	182,345.00	233,405.19		415,750.19
250 Unemployment Compensation	92.05	99.58		191.63
260 Workers' Compensation	3,291.39	3,559.60		6,850.99
270 Group Insurance – Self-Insurance	100,869.71	109,065.43		209,935.14
291 Other Retirement Plans	6,103.74	6,612.38		12,716.12
Total Personnel Services – Employee Benefits	\$334,402.77	\$406,113.83		\$740,516.60
300 Purchased Professional and Technical Services				
329 Professional Educational Services – Other	9,839.50	14,070.00		23,909.50
Total Purchased Professional and Technical Services	\$9,839.50	\$14,070.00		\$23,909.50
500 Other Purchased Services				
580 Travel	2,367.97	8,572.92		10,940.89
Total Other Purchased Services	\$2,367.97	\$8,572.92		\$10,940.89
600 Supplies				
610 General Supplies	83.09	79.00		162.09
630 Food	42.07	1,232.02		1,274.09
650 Supplies & Fees – Technology Related	364,752.00	15,970.58		380,722.58
Total Supplies	\$364,877.16	\$17,281.60		\$382,158.76
800 Other Objects				
810 Dues and Fees		750.00		750.00
Total Other Objects		\$750.00		\$750.00
Total 2260 Instruction and Curriculum Development Services	\$1,275,989.20	\$1,170,343.41		\$2,446,332.61

General Fund (10)

2270 Instructional Staff Professional Development Services

	<u>Elementary</u>	<u>Secondary</u>	<u>Federal</u>	<u>Total</u>
100 Personnel Services – Salaries				
100 Personnel Services – Salaries	241,782.80	262,287.25		504,070.05
Total Personnel Services – Salaries	\$241,782.80	\$262,287.25		\$504,070.05
200 Personnel Services – Employee Benefits				
210 Group Insurance – Contracted Provider	332.21	360.38		692.59
220 Social Security Contributions	18,008.12	19,512.33		37,520.45
230 PSERS Retirement Contributions	78,417.31	84,983.08		163,400.39
240 Tuition Reimbursement	108,099.06	117,107.31		225,206.37
250 Unemployment Compensation	29.38	31.82		61.20
260 Workers' Compensation	1,053.04	1,140.80		2,193.84
270 Group Insurance – Self-Insurance	17,220.52	18,655.56		35,876.08
Total Personnel Services – Employee Benefits	\$223,159.64	\$241,791.28		\$464,950.92
300 Purchased Professional and Technical Services				
329 Professional Educational Services – Other	1,000.00			1,000.00
330 Other Professional Services		1,643.75		1,643.75
340 Technical Services	5,760.00	6,240.00		12,000.00
Total Purchased Professional and Technical Services	\$6,760.00	\$7,883.75		\$14,643.75
400 Purchased Property Services				
430 Repairs and Maintenance Services	182.63	197.85		380.48
Total Purchased Property Services	\$182.63	\$197.85		\$380.48
500 Other Purchased Services				
580 Travel	2,682.85	10,905.74	45,897.16	59,485.75
Total Other Purchased Services	\$2,682.85	\$10,905.74	\$45,897.16	\$59,485.75
600 Supplies				
610 General Supplies	901.70	832.33		1,734.03
630 Food	825.90	762.36		1,588.26
640 Books and Periodicals	2,285.05	2,109.28		4,394.33
Total Supplies	\$4,012.65	\$3,703.97		\$7,716.62
800 Other Objects				
810 Dues and Fees	232.94	215.03		447.97
Total Other Objects	\$232.94	\$215.03		\$447.97
Total 2270 Instructional Staff Professional Development Services	\$478,813.51	\$526,984.87	\$45,897.16	\$1,051,695.54

General Fund (10)

	<u>Elementary</u>	<u>Secondary</u>	<u>Federal</u>	<u>Total</u>
2290 Other Instructional Staff Services				
100 Personnel Services – Salaries				
100 Personnel Services – Salaries	501,382.17	543,164.01		1,044,546.18
Total Personnel Services – Salaries	\$501,382.17	\$543,164.01		\$1,044,546.18
200 Personnel Services – Employee Benefits				
210 Group Insurance – Contracted Provider	514.56	557.44		1,072.00
220 Social Security Contributions	37,203.76	40,304.08		77,507.84
230 PSERS Retirement Contributions	163,300.11	176,908.46		340,208.57
250 Unemployment Compensation	75.04	81.29		156.33
260 Workers' Compensation	2,698.80	2,923.69		5,622.49
270 Group Insurance – Self-Insurance	67,486.78	73,110.67		140,597.45
291 Other Retirement Plans	8,689.93	9,414.09		18,104.02
Total Personnel Services – Employee Benefits	\$279,968.98	\$303,299.72		\$583,268.70
Total 2290 Other Instructional Staff Services	\$781,351.15	\$846,463.73		\$1,627,814.88

General Fund (10)

2300 Support Services – Administration

100 Personnel Services – Salaries

	<u>Elementary</u>	<u>Secondary</u>	<u>Federal</u>	<u>Total</u>
100 Personnel Services – Salaries	3,613,027.51	3,679,816.09		8,302,263.27
Total Personnel Services – Salaries	\$3,613,027.51	\$3,679,816.09		\$8,302,263.27

200 Personnel Services – Employee Benefits

210 Group Insurance – Contracted Provider	4,421.07	4,675.78		10,029.81
220 Social Security Contributions	254,680.14	263,168.76		583,903.11
230 PSERS Retirement Contributions	1,192,690.44	1,222,016.75		2,680,030.00
250 Unemployment Compensation	599.76	551.35		1,253.90
260 Workers' Compensation	21,549.78	19,805.65		45,057.95
270 Group Insurance – Self-Insurance	506,170.53	509,943.55		1,101,643.11
291 Other Retirement Plans	53,086.97	59,499.84		128,097.25
299 All Other Employee Benefits		5,892.00		5,892.00
Total Personnel Services – Employee Benefits	\$2,033,198.69	\$2,085,553.68		\$4,555,907.13

300 Purchased Professional and Technical Services

310 Official / Administrative Services				734,818.12
324 Professional Educational Services – Employee Training and Development Services				1,339.00
330 Other Professional Services		4,527.00		259,503.22
340 Technical Services				37,586.35
Total Purchased Professional and Technical Services		\$4,527.00		\$1,033,246.69

400 Purchased Property Services

430 Repairs and Maintenance Services				559.44
440 Rentals				18,523.92
Total Purchased Property Services				\$19,083.36

500 Other Purchased Services

520 Insurance – General				218,077.50
530 Communications	2,965.72	12,611.56		48,242.16
541 Advertising Related to Federal Grant Awards				130.27
549 Other Advertising/Public Relations				1,957.68
550 Printing and Binding				8,969.00
580 Travel	209.69	9,485.78		22,724.54
Total Other Purchased Services	\$3,175.41	\$22,097.34		\$300,101.15

600 Supplies

610 General Supplies	30,102.18	136,564.75		189,941.95
630 Food	4,004.93	12,027.23		41,702.02
640 Books and Periodicals				3,189.21
Total Supplies	\$34,107.11	\$148,591.98		\$234,833.18

800 Other Objects

810 Dues and Fees	9,327.54	11,740.99		39,591.68
Total Other Objects	\$9,327.54	\$11,740.99		\$39,591.68

Total 2300 Support Services – Administration	\$5,692,836.26	\$5,952,327.08		\$14,485,026.46
-----------------------------------------------------	-----------------------	-----------------------	--	------------------------

REVISED SUBMISSION

General Fund (10)

2310 Board Services

Elementary

Secondary

Federal

Total

500 Other Purchased Services

520 Insurance – General

218,077.50

549 Other Advertising/Public Relations

1,957.68

Total Other Purchased Services

\$220,035.18

800 Other Objects

810 Dues and Fees

16,384.15

Total Other Objects

\$16,384.15

Total 2310 Board Services

\$236,419.33

General Fund (10)

	<u>Elementary</u>	<u>Secondary</u>	<u>Federal</u>	<u>Total</u>
2330 Tax Assessment and Collection Services				
100 Personnel Services – Salaries				
100 Personnel Services – Salaries				166,673.50
Total Personnel Services – Salaries				\$166,673.50
200 Personnel Services – Employee Benefits				
220 Social Security Contributions				12,750.58
250 Unemployment Compensation				0.40
260 Workers' Compensation				21.50
Total Personnel Services – Employee Benefits				\$12,772.48
300 Purchased Professional and Technical Services				
310 Official / Administrative Services				734,818.12
Total Purchased Professional and Technical Services				\$734,818.12
500 Other Purchased Services				
530 Communications				5,755.05
Total Other Purchased Services				\$5,755.05
Total 2330 Tax Assessment and Collection Services				\$920,019.15

REVISED SUBMISSION

General Fund (10)

2340 Staff Relations and Negotiations Services

Elementary

Secondary

Federal

Total

300 Purchased Professional and Technical Services

330 Other Professional Services

57,223.88

Total Purchased Professional and Technical Services

\$57,223.88

Total 2340 Staff Relations and Negotiations Services

\$57,223.88

REVISED SUBMISSION

General Fund (10)

2350 Legal and Accounting Services

Elementary

Secondary

Federal

Total

300 Purchased Professional and Technical Services

330 Other Professional Services

149,602.34

Total Purchased Professional and Technical Services

\$149,602.34

Total 2350 Legal and Accounting Services

\$149,602.34

General Fund (10)

2360 Office of the Superintendent / Executive Director Services

Elementary

Secondary

Federal

Total

100 Personnel Services – Salaries

100 Personnel Services – Salaries

772,268.32

Total Personnel Services – Salaries

\$772,268.32

200 Personnel Services – Employee Benefits

210 Group Insurance – Contracted Provider

932.96

220 Social Security Contributions

48,194.84

230 PSERS Retirement Contributions

245,391.26

250 Unemployment Compensation

86.43

260 Workers' Compensation

3,108.99

270 Group Insurance – Self-Insurance

79,358.53

291 Other Retirement Plans

14,337.80

Total Personnel Services – Employee Benefits

\$391,410.81

500 Other Purchased Services

580 Travel

8,531.32

Total Other Purchased Services

\$8,531.32

600 Supplies

610 General Supplies

996.00

630 Food

24,265.30

640 Books and Periodicals

3,005.64

Total Supplies

\$28,266.94

800 Other Objects

810 Dues and Fees

319.00

Total Other Objects

\$319.00

Total 2360 Office of the Superintendent / Executive Director Services

\$1,200,796.39

General Fund (10)

2370 Community Relations Services

Elementary

Secondary

Federal

Total

100 Personnel Services – Salaries

100 Personnel Services – Salaries

65,026.09

Total Personnel Services – Salaries

\$65,026.09

200 Personnel Services – Employee Benefits

220 Social Security Contributions

4,691.73

230 PSERS Retirement Contributions

19,931.55

250 Unemployment Compensation

5.88

260 Workers' Compensation

206.29

270 Group Insurance – Self-Insurance

6,170.50

291 Other Retirement Plans

1,172.64

Total Personnel Services – Employee Benefits

\$32,178.59

300 Purchased Professional and Technical Services

340 Technical Services

37,586.35

Total Purchased Professional and Technical Services

\$37,586.35

500 Other Purchased Services

550 Printing and Binding

8,969.00

580 Travel

1,268.02

Total Other Purchased Services

\$10,237.02

600 Supplies

610 General Supplies

5,435.57

Total Supplies

\$5,435.57

800 Other Objects

810 Dues and Fees

275.00

Total Other Objects

\$275.00

Total 2370 Community Relations Services

\$150,738.62

General Fund (10)

2380 Office of the Principal Services

100 Personnel Services – Salaries

	<u>Elementary</u>	<u>Secondary</u>	<u>Federal</u>	<u>Total</u>
100 Personnel Services – Salaries	3,613,027.51	3,679,816.09		7,292,843.60
Total Personnel Services – Salaries	\$3,613,027.51	\$3,679,816.09		\$7,292,843.60

200 Personnel Services – Employee Benefits

210 Group Insurance – Contracted Provider	4,421.07	4,675.78		9,096.85
220 Social Security Contributions	254,680.14	263,168.76		517,848.90
230 PSERS Retirement Contributions	1,192,690.44	1,222,016.75		2,414,707.19
250 Unemployment Compensation	599.76	551.35		1,151.11
260 Workers' Compensation	21,549.78	19,805.65		41,355.43
270 Group Insurance – Self-Insurance	506,170.53	509,943.55		1,016,114.08
291 Other Retirement Plans	53,086.97	59,499.84		112,586.81
299 All Other Employee Benefits		5,892.00		5,892.00
Total Personnel Services – Employee Benefits	\$2,033,198.69	\$2,085,553.68		\$4,118,752.37

300 Purchased Professional and Technical Services

330 Other Professional Services		4,527.00		4,527.00
Total Purchased Professional and Technical Services		\$4,527.00		\$4,527.00

500 Other Purchased Services

530 Communications	2,965.72	12,611.56		15,577.28
580 Travel	209.69	9,485.78		9,695.47
Total Other Purchased Services	\$3,175.41	\$22,097.34		\$25,272.75

600 Supplies

610 General Supplies	30,102.18	136,564.75		166,666.93
630 Food	4,004.93	12,027.23		16,032.16
Total Supplies	\$34,107.11	\$148,591.98		\$182,699.09

800 Other Objects

810 Dues and Fees	9,327.54	11,740.99		21,068.53
Total Other Objects	\$9,327.54	\$11,740.99		\$21,068.53

Total 2380 Office of the Principal Services

	\$5,692,836.26	\$5,952,327.08		\$11,645,163.34
--	-----------------------	-----------------------	--	------------------------

General Fund (10)

2390 Other Administration Services

Elementary Secondary Federal Total

100 Personnel Services – Salaries

100 Personnel Services – Salaries 5,451.76

Total Personnel Services – Salaries \$5,451.76

200 Personnel Services – Employee Benefits

220 Social Security Contributions 417.06

250 Unemployment Compensation 10.08

260 Workers' Compensation 365.74

Total Personnel Services – Employee Benefits \$792.88

300 Purchased Professional and Technical Services

324 Professional Educational Services – Employee Training and Development Services 1,339.00

330 Other Professional Services 48,150.00

Total Purchased Professional and Technical Services \$49,489.00

400 Purchased Property Services

430 Repairs and Maintenance Services 559.44

440 Rentals 18,523.92

Total Purchased Property Services \$19,083.36

500 Other Purchased Services

530 Communications 26,909.83

541 Advertising Related to Federal Grant Awards 130.27

580 Travel 3,229.73

Total Other Purchased Services \$30,269.83

600 Supplies

610 General Supplies 16,843.45

630 Food 1,404.56

640 Books and Periodicals 183.57

Total Supplies \$18,431.58

800 Other Objects

810 Dues and Fees 1,545.00

Total Other Objects \$1,545.00

Total 2390 Other Administration Services \$125,063.41

General Fund (10)

2400 Support Services – Pupil Health

Elementary

Secondary

Federal

Total

100 Personnel Services – Salaries

100 Personnel Services – Salaries

2,483,273.67

Total Personnel Services – Salaries

\$2,483,273.67

200 Personnel Services – Employee Benefits

210 Group Insurance – Contracted Provider

2,948.49

220 Social Security Contributions

183,491.91

230 PSERS Retirement Contributions

757,692.01

250 Unemployment Compensation

1,462.91

260 Workers' Compensation

51,118.34

270 Group Insurance – Self-Insurance

443,052.71

Total Personnel Services – Employee Benefits

\$1,439,766.37

300 Purchased Professional and Technical Services

329 Professional Educational Services – Other

354.95

330 Other Professional Services

53,405.00

Total Purchased Professional and Technical Services

\$53,759.95

500 Other Purchased Services

580 Travel

1,090.34

Total Other Purchased Services

\$1,090.34

600 Supplies

610 General Supplies

55,367.64

640 Books and Periodicals

9.90

Total Supplies

\$55,377.54

800 Other Objects

810 Dues and Fees

700.00

Total Other Objects

\$700.00

Total 2400 Support Services – Pupil Health

\$4,033,967.87

General Fund (10)

2440 Nursing Services

	<u>Elementary</u>	<u>Secondary</u>	<u>Federal</u>	<u>Total</u>
--	-------------------	------------------	----------------	--------------

100 Personnel Services – Salaries				
100 Personnel Services – Salaries				2,400,412.06
Total Personnel Services – Salaries				\$2,400,412.06
200 Personnel Services – Employee Benefits				
210 Group Insurance – Contracted Provider				2,853.25
220 Social Security Contributions				177,342.37
230 PSERS Retirement Contributions				730,703.88
250 Unemployment Compensation				1,450.07
260 Workers' Compensation				50,656.85
270 Group Insurance – Self-Insurance				431,976.94
Total Personnel Services – Employee Benefits				\$1,394,983.36
300 Purchased Professional and Technical Services				
329 Professional Educational Services – Other				354.95
330 Other Professional Services				53,405.00
Total Purchased Professional and Technical Services				\$53,759.95
500 Other Purchased Services				
580 Travel				1,090.34
Total Other Purchased Services				\$1,090.34
600 Supplies				
610 General Supplies				55,367.64
640 Books and Periodicals				9.90
Total Supplies				\$55,377.54
800 Other Objects				
810 Dues and Fees				700.00
Total Other Objects				\$700.00
Total 2440 Nursing Services				\$3,906,323.25

General Fund (10)

2450 Nonpublic Health Services

Elementary

Secondary

Federal

Total

100 Personnel Services – Salaries

100 Personnel Services – Salaries

82,861.61

Total Personnel Services – Salaries

\$82,861.61

200 Personnel Services – Employee Benefits

210 Group Insurance – Contracted Provider

95.24

220 Social Security Contributions

6,149.54

230 PSERS Retirement Contributions

26,988.13

250 Unemployment Compensation

12.84

260 Workers' Compensation

461.49

270 Group Insurance – Self-Insurance

11,075.77

Total Personnel Services – Employee Benefits

\$44,783.01

Total 2450 Nonpublic Health Services

\$127,644.62

General Fund (10)

2500 Support Services – Business

Elementary Secondary Federal Total

100 Personnel Services – Salaries

100 Personnel Services – Salaries 998,148.56

Total Personnel Services – Salaries \$998,148.56

200 Personnel Services – Employee Benefits

210 Group Insurance – Contracted Provider 1,143.89

220 Social Security Contributions 69,780.58

230 PSERS Retirement Contributions 321,474.39

250 Unemployment Compensation 174.36

260 Workers' Compensation 6,260.98

270 Group Insurance – Self-Insurance 153,976.15

291 Other Retirement Plans 13,270.22

Total Personnel Services – Employee Benefits \$566,080.57

300 Purchased Professional and Technical Services

324 Professional Educational Services – Employee Training and Development Services 293.75

330 Other Professional Services 58,091.75

Total Purchased Professional and Technical Services \$58,385.50

400 Purchased Property Services

430 Repairs and Maintenance Services 8,841.60

440 Rentals 36.94

Total Purchased Property Services \$8,878.54

500 Other Purchased Services

530 Communications 2,439.35

549 Other Advertising/Public Relations 8,560.60

580 Travel 658.57

Total Other Purchased Services \$11,658.52

600 Supplies

610 General Supplies 3,185.06

630 Food 1,332.79

Total Supplies \$4,517.85

800 Other Objects

810 Dues and Fees 2,604.65

Total Other Objects \$2,604.65

Total 2500 Support Services – Business \$1,650,274.19

General Fund (10)

2510 Fiscal Services

Elementary

Secondary

Federal

Total

100 Personnel Services – Salaries

100 Personnel Services – Salaries

998,148.56

Total Personnel Services – Salaries

\$998,148.56

200 Personnel Services – Employee Benefits

210 Group Insurance – Contracted Provider

1,143.89

220 Social Security Contributions

69,780.58

230 PSERS Retirement Contributions

321,474.39

250 Unemployment Compensation

174.36

260 Workers' Compensation

6,260.98

270 Group Insurance – Self-Insurance

153,976.15

291 Other Retirement Plans

13,270.22

Total Personnel Services – Employee Benefits

\$566,080.57

300 Purchased Professional and Technical Services

324 Professional Educational Services – Employee Training and Development Services

293.75

330 Other Professional Services

58,091.75

Total Purchased Professional and Technical Services

\$58,385.50

400 Purchased Property Services

430 Repairs and Maintenance Services

8,841.60

440 Rentals

36.94

Total Purchased Property Services

\$8,878.54

500 Other Purchased Services

530 Communications

2,439.35

549 Other Advertising/Public Relations

8,560.60

580 Travel

658.57

Total Other Purchased Services

\$11,658.52

600 Supplies

610 General Supplies

3,185.06

630 Food

1,332.79

Total Supplies

\$4,517.85

800 Other Objects

810 Dues and Fees

2,604.65

Total Other Objects

\$2,604.65

Total 2510 Fiscal Services

\$1,650,274.19

General Fund (10)

2511 Supervision of Fiscal Services - Head of Component

Elementary

Secondary

Federal

Total

100 Personnel Services – Salaries

100 Personnel Services – Salaries

197,931.51

Total Personnel Services – Salaries

\$197,931.51

200 Personnel Services – Employee Benefits

210 Group Insurance – Contracted Provider

226.83

220 Social Security Contributions

10,800.95

230 PSERS Retirement Contributions

63,249.85

250 Unemployment Compensation

14.28

260 Workers' Compensation

513.09

270 Group Insurance – Self-Insurance

15,822.44

291 Other Retirement Plans

5,491.19

Total Personnel Services – Employee Benefits

\$96,118.63

Total 2511 Supervision of Fiscal Services - Head of Component

\$294,050.14

General Fund (10)

	<u>Elementary</u>	<u>Secondary</u>	<u>Federal</u>	<u>Total</u>
2515 Financial Accounting Services				
100 Personnel Services – Salaries				
100 Personnel Services – Salaries				800,217.05
Total Personnel Services – Salaries				\$800,217.05
200 Personnel Services – Employee Benefits				
210 Group Insurance – Contracted Provider				917.06
220 Social Security Contributions				58,979.63
230 PSERS Retirement Contributions				258,224.54
250 Unemployment Compensation				160.08
260 Workers' Compensation				5,747.89
270 Group Insurance – Self-Insurance				138,153.71
291 Other Retirement Plans				7,779.03
Total Personnel Services – Employee Benefits				\$469,961.94
300 Purchased Professional and Technical Services				
324 Professional Educational Services – Employee Training and Development Services				293.75
330 Other Professional Services				58,091.75
Total Purchased Professional and Technical Services				\$58,385.50
400 Purchased Property Services				
430 Repairs and Maintenance Services				8,841.60
440 Rentals				36.94
Total Purchased Property Services				\$8,878.54
500 Other Purchased Services				
530 Communications				2,439.35
549 Other Advertising/Public Relations				8,560.60
580 Travel				658.57
Total Other Purchased Services				\$11,658.52
600 Supplies				
610 General Supplies				3,185.06
630 Food				1,332.79
Total Supplies				\$4,517.85
800 Other Objects				
810 Dues and Fees				2,604.65
Total Other Objects				\$2,604.65
Total 2515 Financial Accounting Services				\$1,356,224.05

General Fund (10)

	<u>Elementary</u>	<u>Secondary</u>	<u>Federal</u>	<u>Total</u>
2600 Operation and Maintenance of Plant Services				
100 Personnel Services – Salaries				
100 Personnel Services – Salaries				9,696,290.27
Total Personnel Services – Salaries				\$9,696,290.27
200 Personnel Services – Employee Benefits				
210 Group Insurance – Contracted Provider				10,964.88
220 Social Security Contributions				755,155.81
230 PSERS Retirement Contributions				3,252,761.48
250 Unemployment Compensation				40.10
260 Workers' Compensation				111,575.53
270 Group Insurance – Self-Insurance				2,756,493.29
291 Other Retirement Plans				10,315.34
299 All Other Employee Benefits				2,946.00
Total Personnel Services – Employee Benefits				\$6,900,252.43
300 Purchased Professional and Technical Services				
330 Other Professional Services				5,587.48
Total Purchased Professional and Technical Services				\$5,587.48
400 Purchased Property Services				
410 Cleaning Services				689,803.10
420 Utility Services				2,508,273.51
430 Repairs and Maintenance Services				1,310,548.60
440 Rentals				51,989.93
460 Extermination Services				24,000.00
490 Other Purchased Property Services				151,000.97
Total Purchased Property Services				\$4,735,616.11
500 Other Purchased Services				
521 Fire Insurance				355,659.00
523 General Property and Liability Insurance				262,224.00
529 Other Insurance				17,571.76
530 Communications				5.60
580 Travel				21,487.00
Total Other Purchased Services				\$656,947.36
600 Supplies				
610 General Supplies	650,958.10	705,204.60		1,356,162.70
620 Energy				899,174.02
630 Food				422.65
Total Supplies	\$650,958.10	\$705,204.60		\$2,255,759.37
700 Property				
752 Capital Equipment – Original and Additional				13,070.00
762 Capitalized Equipment - Replacement				31,418.30
768 Capitalized Technology Software - Replacement				21,452.02
Total Property				\$65,940.32
800 Other Objects				

REVISED SUBMISSION

General Fund (10)

2600 Operation and Maintenance of Plant Services

Elementary

Secondary

Federal

Total

800 Other Objects

810 Dues and Fees

3,878.23

Total Other Objects

\$3,878.23

Total 2600 Operation and Maintenance of Plant Services

\$650,958.10

\$705,204.60

\$24,320,271.57

General Fund (10)

2610 Supervision of Operation and Maintenance of Plant Services

Elementary

Secondary

Federal

Total

100 Personnel Services – Salaries

100 Personnel Services – Salaries

127,384.62

Total Personnel Services – Salaries

\$127,384.62

200 Personnel Services – Employee Benefits

210 Group Insurance – Contracted Provider

144.05

220 Social Security Contributions

9,776.14

230 PSERS Retirement Contributions

41,489.28

250 Unemployment Compensation

14.28

260 Workers' Compensation

513.09

291 Other Retirement Plans

2,555.83

Total Personnel Services – Employee Benefits

\$54,492.67

Total 2610 Supervision of Operation and Maintenance of Plant Services

\$181,877.29

General Fund (10)

2611 Supervision of Operation and Maintenance of Plant Services – Head of Component

Elementary

Secondary

Federal

Total

100 Personnel Services – Salaries

100 Personnel Services – Salaries

127,384.62

Total Personnel Services – Salaries

\$127,384.62

200 Personnel Services – Employee Benefits

210 Group Insurance – Contracted Provider

144.05

220 Social Security Contributions

9,776.14

230 PSERS Retirement Contributions

41,489.28

250 Unemployment Compensation

14.28

260 Workers' Compensation

513.09

291 Other Retirement Plans

2,555.83

Total Personnel Services – Employee Benefits

\$54,492.67

Total 2611 Supervision of Operation and Maintenance of Plant Services – Head of Component

\$181,877.29

General Fund (10)

	<u>Elementary</u>	<u>Secondary</u>	<u>Federal</u>	<u>Total</u>
2620 Operation of Buildings Services				
100 Personnel Services – Salaries				
100 Personnel Services – Salaries				9,568,905.65
Total Personnel Services – Salaries				\$9,568,905.65
200 Personnel Services – Employee Benefits				
210 Group Insurance – Contracted Provider				10,820.83
220 Social Security Contributions				745,379.67
230 PSERS Retirement Contributions				3,211,272.20
250 Unemployment Compensation				25.82
260 Workers' Compensation				111,062.44
270 Group Insurance – Self-Insurance				2,756,493.29
291 Other Retirement Plans				7,759.51
299 All Other Employee Benefits				2,946.00
Total Personnel Services – Employee Benefits				\$6,845,759.76
300 Purchased Professional and Technical Services				
330 Other Professional Services				5,587.48
Total Purchased Professional and Technical Services				\$5,587.48
400 Purchased Property Services				
410 Cleaning Services				689,803.10
420 Utility Services				2,508,273.51
430 Repairs and Maintenance Services				1,310,548.60
440 Rentals				51,989.93
460 Extermination Services				24,000.00
490 Other Purchased Property Services				151,000.97
Total Purchased Property Services				\$4,735,616.11
500 Other Purchased Services				
521 Fire Insurance				355,659.00
523 General Property and Liability Insurance				262,224.00
529 Other Insurance				17,571.76
530 Communications				5.60
580 Travel				21,487.00
Total Other Purchased Services				\$656,947.36
600 Supplies				
610 General Supplies	650,958.10	705,204.60		1,356,162.70
620 Energy				899,174.02
630 Food				422.65
Total Supplies	\$650,958.10	\$705,204.60		\$2,255,759.37
700 Property				
752 Capital Equipment – Original and Additional				13,070.00
762 Capitalized Equipment - Replacement				31,418.30
768 Capitalized Technology Software - Replacement				21,452.02
Total Property				\$65,940.32
800 Other Objects				

REVISED SUBMISSION

General Fund (10)

2620 Operation of Buildings Services

Elementary

Secondary

Federal

Total

800 Other Objects

810 Dues and Fees

3,878.23

Total Other Objects

\$3,878.23

Total 2620 Operation of Buildings Services

\$650,958.10

\$705,204.60

\$24,138,394.28

General Fund (10)

	<u>Elementary</u>	<u>Secondary</u>	<u>Federal</u>	<u>Total</u>
2700 Student Transportation Services				
100 Personnel Services – Salaries				
100 Personnel Services – Salaries				5,655,096.07
Total Personnel Services – Salaries				\$5,655,096.07
200 Personnel Services – Employee Benefits				
210 Group Insurance – Contracted Provider				6,188.31
220 Social Security Contributions				412,453.77
230 PSERS Retirement Contributions				1,783,856.76
250 Unemployment Compensation				2,838.70
260 Workers' Compensation				101,948.86
270 Group Insurance – Self-Insurance				1,851,228.29
291 Other Retirement Plans				2,700.24
299 All Other Employee Benefits				2,946.00
Total Personnel Services – Employee Benefits				\$4,164,160.93
300 Purchased Professional and Technical Services				
323 Professional Educational Services – Other Educational Agencies				846.60
330 Other Professional Services				22,370.00
Total Purchased Professional and Technical Services				\$23,216.60
400 Purchased Property Services				
410 Cleaning Services				6,219.49
420 Utility Services				19,122.47
430 Repairs and Maintenance Services				83,198.76
440 Rentals				8,328.13
Total Purchased Property Services				\$116,868.85
500 Other Purchased Services				
511 Student Transportation Services from Another LEA Within the State				185,196.60
513 Contracted Carriers				7,537,519.68
516 Student Transportation Services From the IU				533,493.66
522 Automotive Liability Insurance				205,324.00
530 Communications				149,707.99
580 Travel				10,744.76
Total Other Purchased Services				\$8,621,986.69
600 Supplies				
610 General Supplies				280,617.06
620 Energy				189,186.20
630 Food				87.99
650 Supplies & Fees – Technology Related				51,996.71
Total Supplies				\$521,887.96
800 Other Objects				
810 Dues and Fees				1,240.95
Total Other Objects				\$1,240.95
Total 2700 Student Transportation Services				\$19,104,458.05

General Fund (10)

2710 Supervision of Student Transportation Services

Elementary

Secondary

Federal

Total

100 Personnel Services – Salaries

100 Personnel Services – Salaries

118,431.04

Total Personnel Services – Salaries

\$118,431.04

200 Personnel Services – Employee Benefits

210 Group Insurance – Contracted Provider

147.43

220 Social Security Contributions

7,873.71

230 PSERS Retirement Contributions

34,799.73

250 Unemployment Compensation

14.28

260 Workers' Compensation

513.09

270 Group Insurance – Self-Insurance

15,822.44

291 Other Retirement Plans

1,074.97

Total Personnel Services – Employee Benefits

\$60,245.65

Total 2710 Supervision of Student Transportation Services

\$178,676.69

General Fund (10)

2711 Supervision of Student Transportation Services – Head of Component

Elementary

Secondary

Federal

Total

100 Personnel Services – Salaries

100 Personnel Services – Salaries

118,431.04

Total Personnel Services – Salaries

\$118,431.04

200 Personnel Services – Employee Benefits

210 Group Insurance – Contracted Provider

147.43

220 Social Security Contributions

7,873.71

230 PSERS Retirement Contributions

34,799.73

250 Unemployment Compensation

14.28

260 Workers' Compensation

513.09

270 Group Insurance – Self-Insurance

15,822.44

291 Other Retirement Plans

1,074.97

Total Personnel Services – Employee Benefits

\$60,245.65

Total 2711 Supervision of Student Transportation Services – Head of Component

\$178,676.69

General Fund (10)

2720 Vehicle Operation Services

Elementary

Secondary

Federal

Total

100 Personnel Services – Salaries

100 Personnel Services – Salaries

4,971,155.42

Total Personnel Services – Salaries

\$4,971,155.42

200 Personnel Services – Employee Benefits

210 Group Insurance – Contracted Provider

5,422.05

220 Social Security Contributions

363,334.68

230 PSERS Retirement Contributions

1,570,671.35

250 Unemployment Compensation

2,540.55

260 Workers' Compensation

91,240.88

270 Group Insurance – Self-Insurance

1,650,283.06

291 Other Retirement Plans

1,355.25

299 All Other Employee Benefits

2,651.40

Total Personnel Services – Employee Benefits

\$3,687,499.22

300 Purchased Professional and Technical Services

323 Professional Educational Services – Other Educational Agencies

761.94

330 Other Professional Services

20,133.00

Total Purchased Professional and Technical Services

\$20,894.94

400 Purchased Property Services

410 Cleaning Services

5,597.54

420 Utility Services

17,210.22

430 Repairs and Maintenance Services

74,878.88

440 Rentals

7,495.32

Total Purchased Property Services

\$105,181.96

500 Other Purchased Services

511 Student Transportation Services from Another LEA Within the State

166,676.94

513 Contracted Carriers

6,783,767.71

516 Student Transportation Services From the IU

480,144.29

522 Automotive Liability Insurance

184,791.60

530 Communications

134,737.19

580 Travel

9,670.28

Total Other Purchased Services

\$7,759,788.01

600 Supplies

610 General Supplies

252,555.35

620 Energy

170,267.58

630 Food

79.19

650 Supplies & Fees – Technology Related

46,797.04

Total Supplies

\$469,699.16

800 Other Objects

810 Dues and Fees

1,116.85

Total Other Objects

\$1,116.85

Total 2720 Vehicle Operation Services

\$17,015,335.56

General Fund (10)

2750 Nonpublic Transportation

Elementary Secondary Federal Total

100 Personnel Services – Salaries
100 Personnel Services – Salaries 565,509.61

Total Personnel Services – Salaries \$565,509.61

200 Personnel Services – Employee Benefits

210 Group Insurance – Contracted Provider 618.83
220 Social Security Contributions 41,245.38
230 PSERS Retirement Contributions 178,385.68
250 Unemployment Compensation 283.87
260 Workers' Compensation 10,194.89
270 Group Insurance – Self-Insurance 185,122.79
291 Other Retirement Plans 270.02
299 All Other Employee Benefits 294.60

Total Personnel Services – Employee Benefits \$416,416.06

300 Purchased Professional and Technical Services

323 Professional Educational Services – Other Educational Agencies 84.66
330 Other Professional Services 2,237.00

Total Purchased Professional and Technical Services \$2,321.66

400 Purchased Property Services

410 Cleaning Services 621.95
420 Utility Services 1,912.25
430 Repairs and Maintenance Services 8,319.88
440 Rentals 832.81

Total Purchased Property Services \$11,686.89

500 Other Purchased Services

511 Student Transportation Services from Another LEA Within the State 18,519.66
513 Contracted Carriers 753,751.97
516 Student Transportation Services From the IU 53,349.37
522 Automotive Liability Insurance 20,532.40
530 Communications 14,970.80
580 Travel 1,074.48

Total Other Purchased Services \$862,198.68

600 Supplies

610 General Supplies 28,061.71
620 Energy 18,918.62
630 Food 8.80
650 Supplies & Fees – Technology Related 5,199.67

Total Supplies \$52,188.80

800 Other Objects

810 Dues and Fees 124.10

Total Other Objects \$124.10

Total 2750 Nonpublic Transportation \$1,910,445.80

General Fund (10)

2800 Support Services – Central

	<u>Elementary</u>	<u>Secondary</u>	<u>Federal</u>	<u>Total</u>
100 Personnel Services – Salaries				
100 Personnel Services – Salaries			12,087.56	1,347,220.15
Total Personnel Services – Salaries			\$12,087.56	\$1,347,220.15
200 Personnel Services – Employee Benefits				
210 Group Insurance – Contracted Provider				795.55
220 Social Security Contributions			1,084.64	95,452.20
230 PSERS Retirement Contributions			4,801.60	428,563.72
240 Tuition Reimbursement				55,278.12
250 Unemployment Compensation				264.20
260 Workers' Compensation			30.00	9,522.23
270 Group Insurance – Self-Insurance				250,360.00
291 Other Retirement Plans				12,663.28
Total Personnel Services – Employee Benefits			\$5,916.24	\$852,899.30
300 Purchased Professional and Technical Services				
330 Other Professional Services				208,102.33
340 Technical Services				116,890.55
350 Security / Safety Services				74,836.70
Total Purchased Professional and Technical Services				\$399,829.58
400 Purchased Property Services				
430 Repairs and Maintenance Services				690,703.88
Total Purchased Property Services				\$690,703.88
500 Other Purchased Services				
530 Communications				500,153.14
549 Other Advertising/Public Relations				11,623.70
580 Travel				5,628.94
Total Other Purchased Services				\$517,405.78
600 Supplies				
610 General Supplies				113,812.67
630 Food				2,014.73
640 Books and Periodicals				1,902.26
650 Supplies & Fees – Technology Related				20,863.50
Total Supplies				\$138,593.16
800 Other Objects				
810 Dues and Fees				734.00
Total Other Objects				\$734.00
Total 2800 Support Services – Central			\$18,003.80	\$3,947,385.85

General Fund (10)

2810 Planning, Research, Development and Evaluation Services

Elementary

Secondary

Federal

Total

100 Personnel Services – Salaries

100 Personnel Services – Salaries 582,067.07

Total Personnel Services – Salaries \$582,067.07

200 Personnel Services – Employee Benefits

210 Group Insurance – Contracted Provider 534.23

220 Social Security Contributions 43,199.92

230 PSERS Retirement Contributions 189,579.20

250 Unemployment Compensation 121.40

260 Workers' Compensation 4,361.33

270 Group Insurance – Self-Insurance 107,958.04

291 Other Retirement Plans 4,870.20

Total Personnel Services – Employee Benefits \$350,624.32

300 Purchased Professional and Technical Services

340 Technical Services 116,890.55

350 Security / Safety Services 74,836.70

Total Purchased Professional and Technical Services \$191,727.25

400 Purchased Property Services

430 Repairs and Maintenance Services 670,412.56

Total Purchased Property Services \$670,412.56

500 Other Purchased Services

530 Communications 500,153.14

580 Travel 4,237.06

Total Other Purchased Services \$504,390.20

600 Supplies

610 General Supplies 96,814.18

630 Food 1,112.57

650 Supplies & Fees – Technology Related 20,068.50

Total Supplies \$117,995.25

Total 2810 Planning, Research, Development and Evaluation Services \$2,417,216.65

General Fund (10)

2820 Information Services

100 Personnel Services – Salaries

100 Personnel Services – Salaries 134,513.00

Total Personnel Services – Salaries \$134,513.00

200 Personnel Services – Employee Benefits

210 Group Insurance – Contracted Provider 41.76

220 Social Security Contributions 9,814.73

230 PSERS Retirement Contributions 43,810.80

250 Unemployment Compensation 14.28

260 Workers' Compensation 513.09

270 Group Insurance – Self-Insurance 15,822.44

291 Other Retirement Plans 2,698.07

Total Personnel Services – Employee Benefits \$72,715.17

Total 2820 Information Services \$207,228.17

Elementary

Secondary

Federal

Total

General Fund (10)

2821 Supervision of Information Services

Elementary

Secondary

Federal

Total

100 Personnel Services – Salaries

100 Personnel Services – Salaries

134,513.00

Total Personnel Services – Salaries

\$134,513.00

200 Personnel Services – Employee Benefits

210 Group Insurance – Contracted Provider

41.76

220 Social Security Contributions

9,814.73

230 PSERS Retirement Contributions

43,810.80

250 Unemployment Compensation

14.28

260 Workers' Compensation

513.09

270 Group Insurance – Self-Insurance

15,822.44

291 Other Retirement Plans

2,698.07

Total Personnel Services – Employee Benefits

\$72,715.17

Total 2821 Supervision of Information Services

\$207,228.17

General Fund (10)

2830 Staff Services

	<u>Elementary</u>	<u>Secondary</u>	<u>Federal</u>	<u>Total</u>
--	-------------------	------------------	----------------	--------------

100 Personnel Services – Salaries				
100 Personnel Services – Salaries				618,552.52
Total Personnel Services – Salaries				\$618,552.52
200 Personnel Services – Employee Benefits				
210 Group Insurance – Contracted Provider				219.56
220 Social Security Contributions				41,352.91
230 PSERS Retirement Contributions				190,372.12
240 Tuition Reimbursement				55,278.12
250 Unemployment Compensation				128.52
260 Workers' Compensation				4,617.81
270 Group Insurance – Self-Insurance				126,579.52
291 Other Retirement Plans				5,095.01
Total Personnel Services – Employee Benefits				\$423,643.57
300 Purchased Professional and Technical Services				
330 Other Professional Services				208,102.33
Total Purchased Professional and Technical Services				\$208,102.33
400 Purchased Property Services				
430 Repairs and Maintenance Services				20,291.32
Total Purchased Property Services				\$20,291.32
500 Other Purchased Services				
549 Other Advertising/Public Relations				11,623.70
580 Travel				1,391.88
Total Other Purchased Services				\$13,015.58
600 Supplies				
610 General Supplies				16,998.49
630 Food				902.16
640 Books and Periodicals				1,902.26
650 Supplies & Fees – Technology Related				795.00
Total Supplies				\$20,597.91
800 Other Objects				
810 Dues and Fees				734.00
Total Other Objects				\$734.00
Total 2830 Staff Services				\$1,304,937.23

General Fund (10)

2831 Supervision of Staff Services

Elementary

Secondary

Federal

Total

100 Personnel Services – Salaries

100 Personnel Services – Salaries

166,399.92

Total Personnel Services – Salaries

\$166,399.92

200 Personnel Services – Employee Benefits

210 Group Insurance – Contracted Provider

50.53

220 Social Security Contributions

10,416.61

230 PSERS Retirement Contributions

54,196.54

250 Unemployment Compensation

14.28

260 Workers' Compensation

513.09

270 Group Insurance – Self-Insurance

15,822.44

291 Other Retirement Plans

3,334.84

Total Personnel Services – Employee Benefits

\$84,348.33

Total 2831 Supervision of Staff Services

\$250,748.25

General Fund (10)

2832 Recruitment and Placement Services

Elementary

Secondary

Federal

Total

100 Personnel Services – Salaries

100 Personnel Services – Salaries 452,152.60

Total Personnel Services – Salaries \$452,152.60

200 Personnel Services – Employee Benefits

210 Group Insurance – Contracted Provider 169.03

220 Social Security Contributions 30,936.30

230 PSERS Retirement Contributions 136,175.58

250 Unemployment Compensation 114.24

260 Workers' Compensation 4,104.72

270 Group Insurance – Self-Insurance 110,757.08

291 Other Retirement Plans 1,760.17

Total Personnel Services – Employee Benefits \$284,017.12

300 Purchased Professional and Technical Services

330 Other Professional Services 48,102.33

Total Purchased Professional and Technical Services \$48,102.33

400 Purchased Property Services

430 Repairs and Maintenance Services 20,291.32

Total Purchased Property Services \$20,291.32

500 Other Purchased Services

549 Other Advertising/Public Relations 11,623.70

580 Travel 1,391.88

Total Other Purchased Services \$13,015.58

600 Supplies

610 General Supplies 16,998.49

630 Food 902.16

640 Books and Periodicals 1,902.26

650 Supplies & Fees – Technology Related 795.00

Total Supplies \$20,597.91

800 Other Objects

810 Dues and Fees 734.00

Total Other Objects \$734.00

Total 2832 Recruitment and Placement Services \$838,910.86

REVISED SUBMISSION

General Fund (10)

	<u>Elementary</u>	<u>Secondary</u>	<u>Federal</u>	<u>Total</u>
2834 Staff Development Services – Non-Instructional, Certified Staff Only				
200 Personnel Services – Employee Benefits				
240 Tuition Reimbursement				55,278.12
Total Personnel Services – Employee Benefits				\$55,278.12
300 Purchased Professional and Technical Services				
330 Other Professional Services				160,000.00
Total Purchased Professional and Technical Services				\$160,000.00
Total 2834 Staff Development Services – Non-Instructional, Certified Staff Only				\$215,278.12

REVISED SUBMISSION

General Fund (10)

2850 State and Federal Agency Liaison Services

Elementary

Secondary

Federal

Total

100 Personnel Services – Salaries

100 Personnel Services – Salaries

12,087.56

12,087.56

Total Personnel Services – Salaries

\$12,087.56

\$12,087.56

200 Personnel Services – Employee Benefits

220 Social Security Contributions

1,084.64

1,084.64

230 PSERS Retirement Contributions

4,801.60

4,801.60

260 Workers' Compensation

30.00

30.00

Total Personnel Services – Employee Benefits

\$5,916.24

\$5,916.24

Total 2850 State and Federal Agency Liaison Services

\$18,003.80

\$18,003.80

REVISED SUBMISSION

General Fund (10)

2900 Other Support Services

500 Other Purchased Services

591 Services Purchased Locally

595 IU Payments By Withholding

596 Direct Payments To Intermediate Units

Total Other Purchased Services

Total 2900 Other Support Services

Elementary

Secondary

Federal

Total

383.68

137,672.44

85,430.00

\$383.68

\$223,486.12

\$383.68

\$223,486.12

REVISED SUBMISSION

General Fund (10)

2910 Support Services Not Listed Elsewhere In the 2000 Series

Elementary

Secondary

Federal

Total

500 Other Purchased Services

591 Services Purchased Locally

383.68

383.68

595 IU Payments By Withholding

137,672.44

596 Direct Payments To Intermediate Units

85,430.00

Total Other Purchased Services

\$383.68

\$223,486.12

Total 2910 Support Services Not Listed Elsewhere In the 2000 Series

\$383.68

\$223,486.12

General Fund (10)

3000 Operation of Non-Instructional Services

Total

100 Personnel Services – Salaries

100 Personnel Services – Salaries 4,642,274.19

Total Personnel Services – Salaries \$4,642,274.19

200 Personnel Services – Employee Benefits

210 Group Insurance – Contracted Provider 2,848.16

220 Social Security Contributions 349,904.02

230 PSERS Retirement Contributions 1,348,638.37

250 Unemployment Compensation 2,786.18

260 Workers' Compensation 100,507.86

270 Group Insurance – Self-Insurance 220,152.47

291 Other Retirement Plans 5,687.13

Total Personnel Services – Employee Benefits \$2,030,524.19

300 Purchased Professional and Technical Services

329 Professional Educational Services – Other 53,226.00

330 Other Professional Services 521,515.26

Total Purchased Professional and Technical Services \$574,741.26

400 Purchased Property Services

430 Repairs and Maintenance Services 5,651.58

Total Purchased Property Services \$5,651.58

500 Other Purchased Services

549 Other Advertising/Public Relations 1,480.00

580 Travel 49,990.48

Total Other Purchased Services \$51,470.48

600 Supplies

610 General Supplies 747,701.63

620 Energy 30,000.00

630 Food 54,689.20

Total Supplies \$832,390.83

700 Property

762 Capitalized Equipment - Replacement 9,848.40

Total Property \$9,848.40

Total 3000 Operation of Non-Instructional Services \$8,146,900.93

General Fund (10)

3200 Student Activities

Elementary Secondary Federal Total

100 Personnel Services – Salaries
100 Personnel Services – Salaries 2,543,054.20

Total Personnel Services – Salaries \$2,543,054.20

200 Personnel Services – Employee Benefits
210 Group Insurance – Contracted Provider 561.33
220 Social Security Contributions 191,673.56
230 PSERS Retirement Contributions 798,265.73
250 Unemployment Compensation 482.56
260 Workers' Compensation 17,536.00
270 Group Insurance – Self-Insurance 91,532.86
291 Other Retirement Plans 4,361.07

Total Personnel Services – Employee Benefits \$1,104,413.11

300 Purchased Professional and Technical Services
330 Other Professional Services 502,525.76

Total Purchased Professional and Technical Services \$502,525.76

500 Other Purchased Services
580 Travel 24,996.28

Total Other Purchased Services \$24,996.28

600 Supplies
610 General Supplies 495,325.88
620 Energy 30,000.00

Total Supplies \$525,325.88

700 Property
762 Capitalized Equipment - Replacement 9,848.40

Total Property \$9,848.40

Total 3200 Student Activities \$4,710,163.63

General Fund (10)

3300 Community Services

Elementary Secondary Federal Total

100 Personnel Services – Salaries

100 Personnel Services – Salaries 2,099,219.99

Total Personnel Services – Salaries \$2,099,219.99

200 Personnel Services – Employee Benefits

210 Group Insurance – Contracted Provider 2,286.83

220 Social Security Contributions 158,230.46

230 PSERS Retirement Contributions 550,372.64

250 Unemployment Compensation 2,303.62

260 Workers' Compensation 82,971.86

270 Group Insurance – Self-Insurance 128,619.61

291 Other Retirement Plans 1,326.06

Total Personnel Services – Employee Benefits \$926,111.08

300 Purchased Professional and Technical Services

329 Professional Educational Services – Other 53,226.00

330 Other Professional Services 18,989.50

Total Purchased Professional and Technical Services \$72,215.50

400 Purchased Property Services

430 Repairs and Maintenance Services 5,651.58

Total Purchased Property Services \$5,651.58

500 Other Purchased Services

549 Other Advertising/Public Relations 1,480.00

580 Travel 24,994.20

Total Other Purchased Services \$26,474.20

600 Supplies

610 General Supplies 3,867.23 252,375.75

630 Food 999.75 54,689.20

Total Supplies \$4,866.98 \$307,064.95

Total 3300 Community Services \$4,866.98 \$3,436,737.30

REVISED SUBMISSION

General Fund (10)

5000 Other Expenditures and Financing Uses

Total

800 Other Objects

830 Interest 3,610,143.76

Total Other Objects \$3,610,143.76

900 Other Uses of Funds

910 Redemption of Principal 10,980,000.00

939 Other Fund Transfers 28,000,000.00

Total Other Uses of Funds \$38,980,000.00

Total 5000 Other Expenditures and Financing Uses \$42,590,143.76

REVISED SUBMISSION

General Fund (10)

5100 Debt Service / Other Expenditures and Financing Uses	<u>Elementary</u>	<u>Secondary</u>	<u>Federal</u>	<u>Total</u>
800 <u>Other Objects</u>				
830 Interest				3,610,143.76
Total Other Objects				\$3,610,143.76
900 <u>Other Uses of Funds</u>				
910 Redemption of Principal				10,980,000.00
Total Other Uses of Funds				\$10,980,000.00
Total 5100 Debt Service / Other Expenditures and Financing Uses				\$14,590,143.76

REVISED SUBMISSION

General Fund (10)

	<u>Elementary</u>	<u>Secondary</u>	<u>Federal</u>	<u>Total</u>
5110 Debt Service				
800 Other Objects				
830 Interest				3,610,143.76
Total Other Objects				\$3,610,143.76
900 Other Uses of Funds				
910 Redemption of Principal				10,980,000.00
Total Other Uses of Funds				\$10,980,000.00
Total 5110 Debt Service				\$14,590,143.76

REVISED SUBMISSION

General Fund (10)

5200 Interfund Transfers – Out

Elementary

Secondary

Federal

Total

900 Other Uses of Funds

939 Other Fund Transfers

28,000,000.00

Total Other Uses of Funds

\$28,000,000.00

Total 5200 Interfund Transfers – Out

\$28,000,000.00

REVISED SUBMISSION

General Fund (10)

5230 Capital Projects Fund Transfers

Elementary

Secondary

Federal

Total

900 Other Uses of Funds

939 Other Fund Transfers

28,000,000.00

Total Other Uses of Funds

\$28,000,000.00

Total 5230 Capital Projects Fund Transfers

\$28,000,000.00

REVISED SUBMISSION

Other Capital Projects Fund (39)

2000 Support Services

600 Supplies

650 Supplies & Fees – Technology Related

Total

5,961,364.00

Total Supplies \$5,961,364.00

Total 2000 Support Services \$5,961,364.00

REVISED SUBMISSION

Other Capital Projects Fund (39)

2200 Support Services – Instructional Staff

600 Supplies

650 Supplies & Fees – Technology Related

Total Supplies

Total 2200 Support Services – Instructional Staff

Elementary

Secondary

Federal

Total

5,961,364.00

5,961,364.00

\$5,961,364.00

\$5,961,364.00

\$5,961,364.00

\$5,961,364.00

LEA : 122092102 Central Bucks SD

Printed 4/23/2019 4:10:53 PM

REVISED SUBMISSION

Other Capital Projects Fund (39)

2240 Computer-Assisted Instruction Support Services

	<u>Elementary</u>	<u>Secondary</u>	<u>Federal</u>	<u>Total</u>
600 <u>Supplies</u>				
650 Supplies & Fees – Technology Related		5,961,364.00		5,961,364.00
Total Supplies		\$5,961,364.00		\$5,961,364.00
Total 2240 Computer-Assisted Instruction Support Services		\$5,961,364.00		\$5,961,364.00

REVISED SUBMISSION

Other Capital Projects Fund (39)

4000 Facilities Acquisition, Construction and Improvement Services

Total

400 Purchased Property Services

450 Construction Services

12,687,909.00

Total Purchased Property Services

\$12,687,909.00

Total 4000 Facilities Acquisition, Construction and Improvement Services

\$12,687,909.00

REVISED SUBMISSION

Other Capital Projects Fund (39)

4600 Existing Building Improvement Services

Elementary

Secondary

Federal

Total

400 Purchased Property Services

450 Construction Services

12,687,909.00

12,687,909.00

Total Purchased Property Services

\$12,687,909.00

\$12,687,909.00

Total 4600 Existing Building Improvement Services

\$12,687,909.00

\$12,687,909.00

	<u>General Fund(10)</u>	<u>Public Purpose Trust(27)</u>	<u>Other Compt Approved (28)</u>	<u>Athletic / Activity(29)</u>	<u>Capital Reserve (690, 1850)(31)</u>
1000 Instruction					
1100 Regular Programs - Elementary / Secondary	137,234,673.67				
1200 Special Programs - Elementary / Secondary	42,630,167.36				
1300 Vocational Education	4,623,029.28				
1400 Other Instructional Programs - Elementary / Secondary	3,594,052.53				
1500 Nonpublic School Programs	35,839.00				
Total Instruction	\$188,117,761.84				
2000 Support Services					
2100 Support Services - Students	13,448,285.19				
2200 Support Services - Instructional Staff	11,909,521.86				
2300 Support Services - Administration	14,485,026.46				
2400 Support Services - Pupil Health	4,033,967.87				
2500 Support Services - Business	1,650,274.19				
2600 Operation and Maintenance of Plant Services	24,320,271.57				
2700 Student Transportation Services	19,104,458.05				
2800 Support Services - Central	3,947,385.85				
2900 Other Support Services	223,486.12				
Total Support Services	\$93,122,677.16				
3000 Operation of Non-Instructional Services					
3200 Student Activities	4,710,163.63				
3300 Community Services	3,436,737.30				
Total Operation of Non-Instructional Services	\$8,146,900.93				
4000 Facilities Acquisition, Construction and Improvement Services					
4600 Existing Building Improvement Services					
Total Facilities Acquisition, Construction and Improvement					
5000 Other Expenditures and Financing Uses					
5100 Debt Service / Other Expenditures and Financing Uses	14,590,143.76				
5200 Interfund Transfers - Out	28,000,000.00				
Total Other Expenditures and Financing Uses	\$42,590,143.76				
TOTAL ACTUAL EXPENDITURES & OTHER FINANCING USES	\$331,977,483.69				

LEA : 122092102 Central Bucks SD

Printed 4/23/2019 4:10:59 PM

REVISED SUBMISSION

	<u>Capital Reserve (1431)(32)</u>	<u>Other Capital Projects Fund(39)</u>	<u>Debt Service(40)</u>	<u>Permanent(90)</u>	<u>Total</u>
1000 Instruction					
1100 Regular Programs - Elementary / Secondary					137,234,673.67
1200 Special Programs - Elementary / Secondary					42,630,167.36
1300 Vocational Education					4,623,029.28
1400 Other Instructional Programs - Elementary / Secondary					3,594,052.53
1500 Nonpublic School Programs					35,839.00
Total Instruction					\$188,117,761.84
2000 Support Services					
2100 Support Services - Students					13,448,285.19
2200 Support Services - Instructional Staff		5,961,364.00			17,870,885.86
2300 Support Services - Administration					14,485,026.46
2400 Support Services - Pupil Health					4,033,967.87
2500 Support Services - Business					1,650,274.19
2600 Operation and Maintenance of Plant Services					24,320,271.57
2700 Student Transportation Services					19,104,458.05
2800 Support Services - Central					3,947,385.85
2900 Other Support Services					223,486.12
Total Support Services		\$5,961,364.00			\$99,084,041.16
3000 Operation of Non-Instructional Services					
3200 Student Activities					4,710,163.63
3300 Community Services					3,436,737.30
Total Operation of Non-Instructional Services					\$8,146,900.93
4000 Facilities Acquisition, Construction and Improvement Services					
4600 Existing Building Improvement Services		12,687,909.00			12,687,909.00
Total Facilities Acquisition, Construction and Improvement		\$12,687,909.00			\$12,687,909.00
5000 Other Expenditures and Financing Uses					
5100 Debt Service / Other Expenditures and Financing Uses					14,590,143.76
5200 Interfund Transfers - Out					28,000,000.00
Total Other Expenditures and Financing Uses					\$42,590,143.76
TOTAL ACTUAL EXPENDITURES & OTHER FINANCING USES		\$18,649,273.00			\$350,626,756.69

PSERS Salary Data (Salary Data should relate to the General Fund only)

Amount Description	Amount
Total Salary Base for salaries subject to PSERS withholding	156,000,304.08
Total Federally Funded salaries subject to PSERS withholding	2,184,029.29
	<hr/>

Title I Expenditure Data

Amount Description	Amount
Expenditures Funded with Current Title I Funds	661,584.07
Expenditures Funded with Carry over Title I Funds	
Total Title I Expenditure Data	<hr/> \$661,584.07 <hr/>

Benefits for Staff Relative to Collective Bargaining Agreements

	OBJECT	COVERED	NOT COVERED	TOTAL
10 General Fund				
	211 Medical Insurance			
	212 Dental Insurance			
	215 Eye Care Insurance			
	216 Prescription Insurance			
	271 Self-Insurance Medical Benefits	18,792,501.71	989,079.03	19,781,580.74
	272 Self-Insurance Dental Benefits	1,135,202.61	59,747.51	1,194,950.12
	275 Self-Insurance Eye Care Benefits			
	276 Self-Insurance Prescription Benefits	6,692,765.15	352,250.80	7,045,015.95
	FUND TOTAL	\$26,620,469.47	\$1,401,077.34	\$28,021,546.81
50 Enterprise Fund	No Self Insurance data to report			
	211 Medical Insurance			
	212 Dental Insurance			
	215 Eye Care Insurance			
	216 Prescription Insurance			
	271 Self-Insurance Medical Benefits			
	272 Self-Insurance Dental Benefits			
	275 Self-Insurance Eye Care Benefits			
	276 Self-Insurance Prescription Benefits			
	FUND TOTAL			
60 Internal Service Fund	No Self Insurance data to report			
	211 Medical Insurance			
	212 Dental Insurance			
	215 Eye Care Insurance			
	216 Prescription Insurance			
	271 Self-Insurance Medical Benefits			
	272 Self-Insurance Dental Benefits			
	275 Self-Insurance Eye Care Benefits			
	276 Self-Insurance Prescription Benefits			
	FUND TOTAL			
Total of All Funds		\$26,620,469.47	\$1,401,077.34	\$28,021,546.81

LEA : 122092102 Central Bucks SD

Printed 4/23/2019 4:11:06 PM

REVISED SUBMISSION

Page - 1 of 1

Function	Special Education (Prior Year)	Nonspecial Education (Prior Year)	Total (Prior Year)	Special Education (Current Year)	Nonspecial Education (Current Year)	Total (Current Year)
2120 Guidance Services	2,600,898.73	4,830,240.51	7,431,139.24	2,673,900.46	4,858,213.51	7,532,113.97
2140 Psychological Services	1,783,481.83	198,164.65	1,981,646.48	1,880,926.17	208,991.80	2,089,917.97
2150 Speech Pathology and Audiology Services	1,924,234.34	213,803.81	2,138,038.15	1,988,906.74	220,989.64	2,209,896.38
2160 Social Work Services						
2260 Instruction and Curriculum Development Services	92,301.16	1,753,722.09	1,846,023.25	122,236.08	2,324,015.98	2,446,252.06
2350 Legal and Accounting Services	43,087.09	73,481.32	116,568.41	75,147.38	74,454.96	149,602.34
2420 Medical Services						
2440 Nursing Services						
2700 Student Transportation Services	1,874,849.14	16,873,642.00	18,748,491.14	1,797,963.24	17,127,965.55	18,925,928.79
Total	\$8,318,852.29	\$23,943,054.38	\$32,261,906.67	\$8,539,080.07	\$24,814,631.44	\$33,353,711.51

LEA : 122092102 Central Bucks SD

Printed 4/23/2019 4:11:07 PM

REVISED SUBMISSION

(PRINCIPAL AMOUNTS ONLY)

GOVERNMENTAL FUNDS/ ACTIVITIES

	Short-Term Borrowing	General Obligation Bonds/Notes	Authority Building Obligations	Other Long-Term Debt	Other Post-Employment Benefits (OPEB)	Compensated Absences	Net Pension Liability	Total
1. Debt at Beginning of Fiscal Year		75,395,000.00			15,771,901.00	1,782,365.00	555,036,000.00	647,985,266.00
2. Additional Debt Incurred During Year					56,249,982.00	190,548.00	4,683,000.00	61,123,530.00
3. Retirements and Repayments		10,980,000.00						10,980,000.00
4. Debt at End of Fiscal Year		64,415,000.00			72,021,883.00	1,972,913.00	559,719,000.00	698,128,796.00
5. Accreted Interest at End Of Fiscal Year								
6. Total Debt and Accreted Interest		64,415,000.00			72,021,883.00	1,972,913.00	559,719,000.00	698,128,796.00
7. Current Portion P&I - Due within 1 year		13,024,444.00						13,024,444.00
8. Interest Paid during current fiscal year		3,610,144.00						3,610,144.00

(PRINCIPAL AMOUNTS ONLY)

PROPRIETARY FUNDS

- 1. Debt at Beginning of Fiscal Year
- 2. Additional Debt Incurred During Year
- 3. Retirements and Repayments
- 4. Debt at End of Fiscal Year
- 5. Accreted Interest at End Of Fiscal Year
- 6. Total Debt and Accreted Interest
- 7. Current Portion P&I - Due within 1 year
- 8. Interest Paid during current fiscal year

Total Principal and Interest Payments Made by Your School - All Funds

Function	Fund		Principal (910)	Principal (920)	Interest (830)	Total (Principal +Interest)	Misc Other Uses (990)
5110	10	General Fund	10,980,000.00		3,610,143.76	14,590,143.76	
5110	20	Special Revenue Funds					
5110	30	Capital Projects Funds					
5110	40	Debt Service Fund					
5110	90	Permanent Fund					
5120	10	General Fund					
5120	20	Special Revenue Funds					
5120	30	Capital Projects Funds					
5120	40	Debt Service Fund					

Total Debt Payments - Governmental Funds			\$10,980,000.00		\$3,610,143.76	\$14,590,143.76	
-------------------------------------------------	--	--	------------------------	--	-----------------------	------------------------	--

Function	Fund		Principal (910)	Principal (920)	Interest (830)	Total (Principal +Interest)
5110	50	Enterprise Fund				
5110	60	Internal Service Fund				
5120	50	Enterprise Fund				
5120	60	Internal Service Fund				

Total Debt Payments - Proprietary Funds						
------------------------------------------------	--	--	--	--	--	--

Debt Details
Governmental Funds/ Activities

Debt Category	Debt Issue Date (MM/YYYY)	Principal Amounts Only				Current Portion Due Within One Year (Principal and Interest)	Interest Paid During Fiscal Year
		Debt at Beginning of Fiscal Year	Additions	Reductions / Repayments	Debt at End of Fiscal Year		
General Obligation Bonds/Notes – CIB	04/2011	1,025,000.00		225,000.00	800,000.00	37,550.00	44,300.00
General Obligation Bonds/Notes – CIB	04/2011	50,185,000.00		4,380,000.00	45,805,000.00	4,506,394.00	2,356,594.00
General Obligation Bonds/Notes – CIB	02/2007	24,185,000.00		6,375,000.00	17,810,000.00	8,480,500.00	1,209,250.00
Compensated Absences		1,782,365.00	190,548.00		1,972,913.00		
Other Post-Employment Benefits (OPEB)		15,771,901.00	56,249,982.00		72,021,883.00		
Net Pension Liability		555,036,000.00	4,683,000.00		559,719,000.00		
Totals for Debt Entered:		\$647,985,266.00	\$61,123,530.00	\$10,980,000.00	\$698,128,796.00	\$13,024,444.00	\$3,610,144.00

General Fund (10)

Section 1: Tuition/Purchased Services as Reported within Expenditure Detail

	Amount
Tuition Reported in General Fund Expenditures 1000-560	9,233,675.96
Purchased Services in General Fund Expenditures 1000-594 and 1000-597	3,334.20

Section 1 Total	\$9,237,010.16
------------------------	-----------------------

Section 2: Tuition Paid to Institution Types During Fiscal Year

	Tuition Paid For Nonspecial Education	Tuition Paid For Special Education	Total
1 1306 Institutions			
2 Institutionalized Children's Programs		3,334.20	3,334.20
3 Juveniles Incarcerated in Adult Facilities			
4 Residential Treatment Facilities	11,512.18	1,360.00	12,872.18
5 Other Local Education Agencies	18,220.61	633,886.28	652,106.89
6 Brick and Mortar Charter Schools			
7 Cyber Charter Schools	909,314.16	490,931.20	1,400,245.36
8 Career and Technology Centers	2,542,666.10	2,080,363.18	4,623,029.28
9 Approved Private Schools		442,266.45	442,266.45
10 PA Chartered Schools for the Deaf and Blind			
11 Private Residential Rehabilitative Institutions	4,052.86		4,052.86
12 Juvenile Detention Centers	30,663.82		30,663.82
13 Special Program Jointures			
14 Other Tuition Not Included Elsewhere In This Section	667,283.56	1,401,155.56	2,068,439.12
Section 2 Total	\$4,183,713.29	\$5,053,296.87	\$9,237,010.16

REVISED SUBMISSION

1 .	<u>Student Transportation Services for Educational Field Trips</u>	360,254.24
2 .	<u>Student Transportation Services for Student Activities</u>	150,266.86
3 .	<u>Rental of Vehicles for Student Transportation Services</u>	
4 .	<u>Capital Reserve Funds</u>	241,220.50

Include only district-owned transportation expenditures paid from State or local money.
 DO NOT include federal expenditures or payments to contract service providers.
 Contracted transportation services should not be recorded on this schedule.

Food Service / Cafeteria Operations Fund (51)

3000 Operation of Non-Instructional Services

Total

400 Purchased Property Services

430 Repairs and Maintenance Services

524,787.00

Total Purchased Property Services

\$524,787.00

500 Other Purchased Services

570 Food Service Management

3,998,597.00

Total Other Purchased Services

\$3,998,597.00

600 Supplies

610 General Supplies

31,470.00

Total Supplies

\$31,470.00

700 Property

740 Depreciation

93,483.00

Total Property

\$93,483.00

800 Other Objects

810 Dues and Fees

22,501.00

Total Other Objects

\$22,501.00

Total 3000 Operation of Non-Instructional Services

\$4,670,838.00

Food Service / Cafeteria Operations Fund (51)

	<u>Elementary</u>	<u>Secondary</u>	<u>Federal</u>	<u>Total</u>
3100 Food Services				
400 <u>Purchased Property Services</u>				
430 Repairs and Maintenance Services				524,787.00
Total Purchased Property Services				\$524,787.00
500 <u>Other Purchased Services</u>				
570 Food Service Management				3,998,597.00
Total Other Purchased Services				\$3,998,597.00
600 <u>Supplies</u>				
610 General Supplies				31,470.00
Total Supplies				\$31,470.00
700 <u>Property</u>				
740 Depreciation				93,483.00
Total Property				\$93,483.00
800 <u>Other Objects</u>				
810 Dues and Fees				22,501.00
Total Other Objects				\$22,501.00
Total 3100 Food Services				\$4,670,838.00

REVISED SUBMISSION

	<u>Food Service(51)</u>	<u>Child Care Operations(52)</u>	<u>Other Enterprise(58)</u>	<u>Internal Service(60)</u>	<u>Total</u>
3000 <u>Operation of Non-Instructional Services</u>					
3100 Food Services	4,670,838.00				4,670,838.00
Total Operation of Non-Instructional Services	\$4,670,838.00				\$4,670,838.00
TOTAL ACTUAL EXPENDITURES & OTHER FINANCING USES	\$4,670,838.00				\$4,670,838.00